



FRAME YOUR MASTERPIECE.



[quantumwindows.com](http://quantumwindows.com)









# TABLE OF CONTENTS

## INTRODUCTION 3-4

Our Story 3

Quantum Facility 4

## PRODUCT OVERVIEW 5-54

### Wood/Clad Systems 5-24

Picture Windows 7-8

Active Windows (Casement, Awning) 9-10

Hinged Doors 11-12

Bi-Fold Systems 13-14

Lift & Slide Systems 15-16

Wood/Clad Technical Information 17-22

Alpha 1 - Wood/Clad Project 23-24

### All Wood Systems 25-44

Picture Windows 27-28

Active Windows (Casement, Awning) 29-30

Hinged Doors 31-32

Bi-Fold Systems 33-34

Lift & Slide Systems 35-36

All Wood Technical Information 37-42

Battle Ranch - All Wood Project 43-44

### Pivot Doors 45-48

Examples/ Technical Information 46

O'Connor - Pivot Door Project 47-48

### Legacy Series Windows 49-54

Examples/Technical Information 52

Denny Blaine - Legacy Project 53-54

### Finishes 55-57

Wood Finishes 55

Clad Finishes 56

Nail Fin Options 57



# Our Story



## Crafting Excellence Since 1982

Quantum Windows & Doors began with a bold ambition: to reimagine how windows and doors could shape architectural spaces. What started in a small Pacific Northwest workshop in 1982, rooted in handcrafted wood and a commitment to quality, quickly set a new benchmark. From the start, we believed that great design, paired with expert execution, could elevate both the form & function of a building.



### EVOLVING WITH PURPOSE

As architectural trends shifted, Quantum embraced innovation while staying true to our craftsmanship roots. Collaborating with architects and builders, we created tailored solutions that merge structural performance with refined aesthetics always balancing precision and artistry.







At the heart of Quantum is a culture of collaboration. Our team in the office and our craftspeople work side by side, exchanging ideas and refining every detail with care. We believe that great design is not only made, it's shared. That's why we listen first, striving to understand the unique vision behind each project before shaping it into reality through proportion, material, and intent.



## LOOKING AHEAD

From our brand new advanced facilities in Arlington, Washington, we continue to blend innovation with tradition. While technology evolves, our commitment to handcrafted quality endures, shaping windows and doors that perform beautifully and inspire lasting impact.





# Wood/Clad Systems

A photograph of a modern house with a steep, wood-clad roof and large glass windows. The house features a stone fireplace and a pool in the foreground. The text is overlaid on the left side of the image.

## Natural Elegance, Built to Endure.

Quantum's wood/clad systems fuse natural beauty with lasting durability. Warm wood interiors meet protective aluminum exteriors, crafted to endure the elements while preserving the elegance of fine hardwoods.

Perfect for coastal or mountain settings, these windows and doors deliver clean sightlines, high-performance glazing, and precision-crafted frames that support bold design and long-term reliability.

Whether framing panoramic views or fine architectural details, Quantum's wood/clad systems elevate both residential and commercial spaces.







# Picture Windows



Your World, Uninterrupted.

Quantum's wood/clad picture windows deliver expansive, unobstructed sightlines in dimensions once thought impossible. Whether specified as a stand-alone focal point or integrated into a curtain-wall assembly, minimalist mullions and jambs maintain a refined, architectural profile. Designed to integrate effortlessly into any architectural style, these windows enhance both visual impact and functional performance with elegance.



## Thermal Performance

Wood/clad picture windows are engineered for exceptional thermal performance, with dual-pane configurations delivering **U-values as low as 0.21** and triple-pane options reaching **0.17**, made possible by Quantum's patented Q-Core® technology.

## Expansive Dimensions

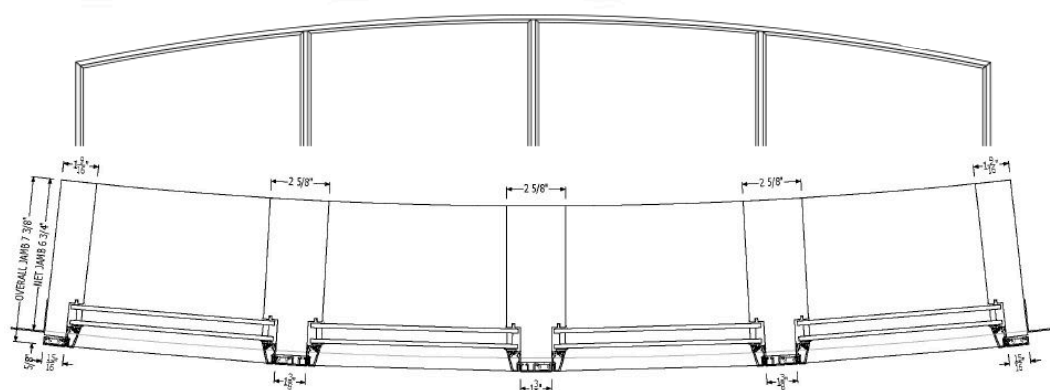
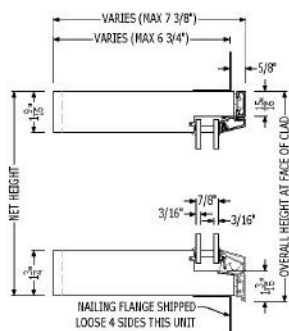
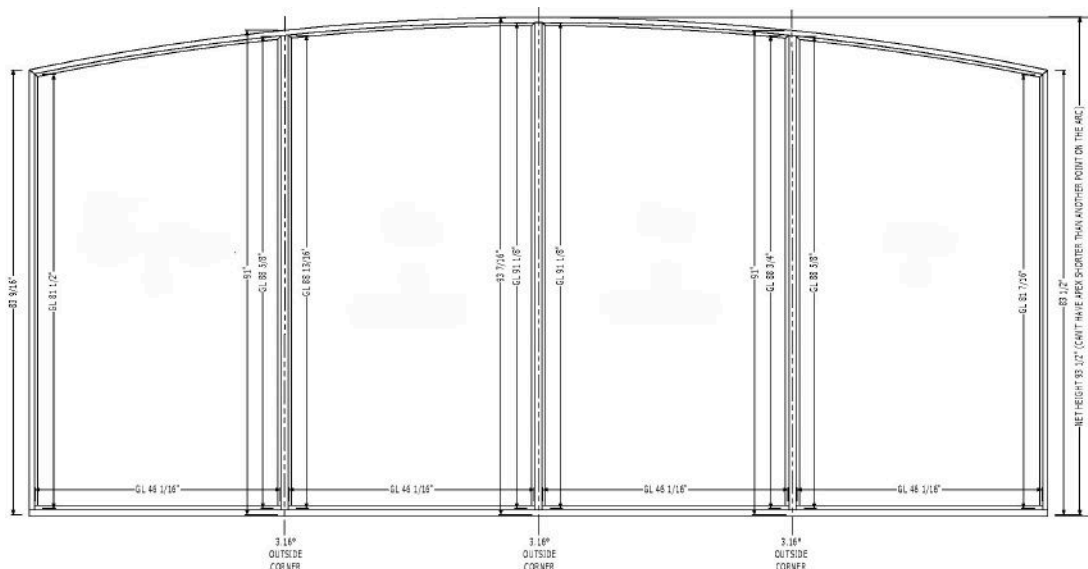
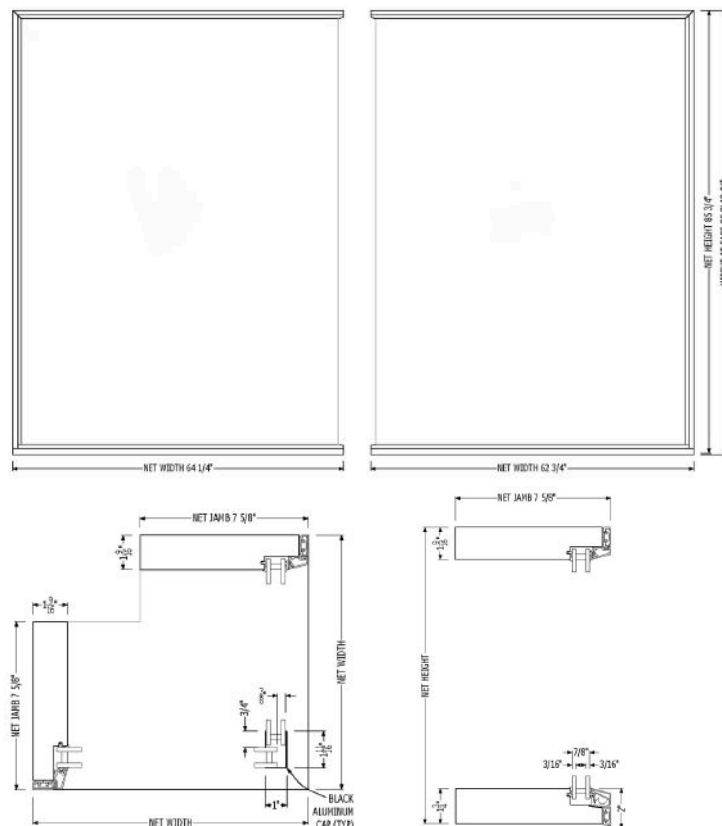
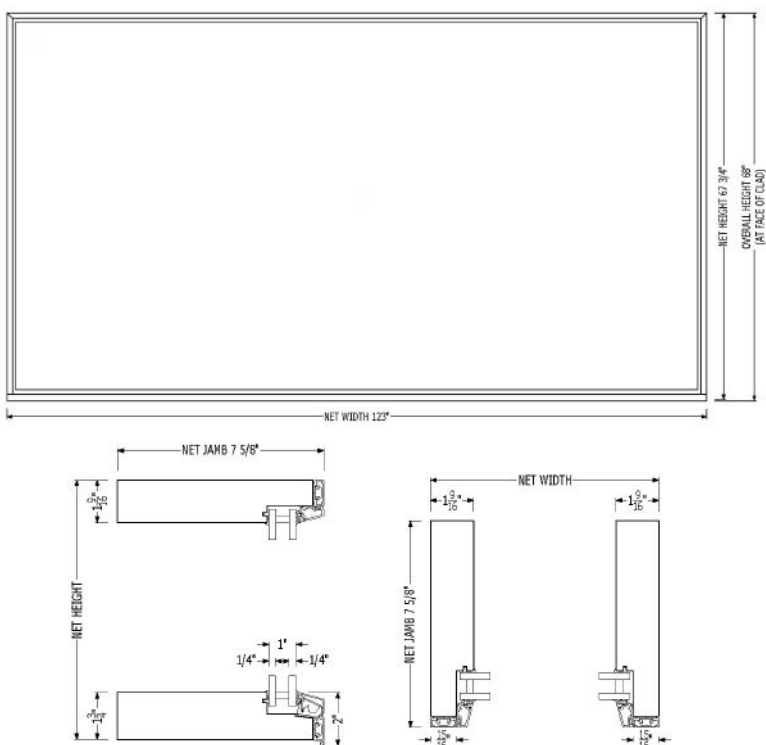
Picture windows can be crafted up to **124" wide** and **298" tall**, allowing any view to be captured without sacrificing structural integrity.

## System Compatibility

Wood/clad picture windows feature a minimum net jamb depth of **3 1/4 inches**, ensuring compatibility with a wide range of wall conditions while maintaining a clean, integrated appearance.



# Examples





# Active Windows



## Casement & Awning.

Quantum's wood/clad active windows offer clean sightlines, smooth operation, and excellent ventilation. Whether a casement or an awning, each unit is crafted with high-performance glazing and precision hardware for durability and ease. Designed to blend seamlessly into any space, they elevate both function and aesthetics without compromise.

### Thermal Performance

Quantum's casement and awning windows are engineered to meet rigorous thermal standards, with dual-pane configurations achieving **U-values as low as 0.23** and triple-pane options reaching **0.21**.

### Expansive Dimensions

Casement windows can be built up to **48" wide** and up to **120" tall**, depending on the configuration. These maximums allow for expansive openings that enhance natural light and ventilation while maintaining structural integrity and clean aesthetics.

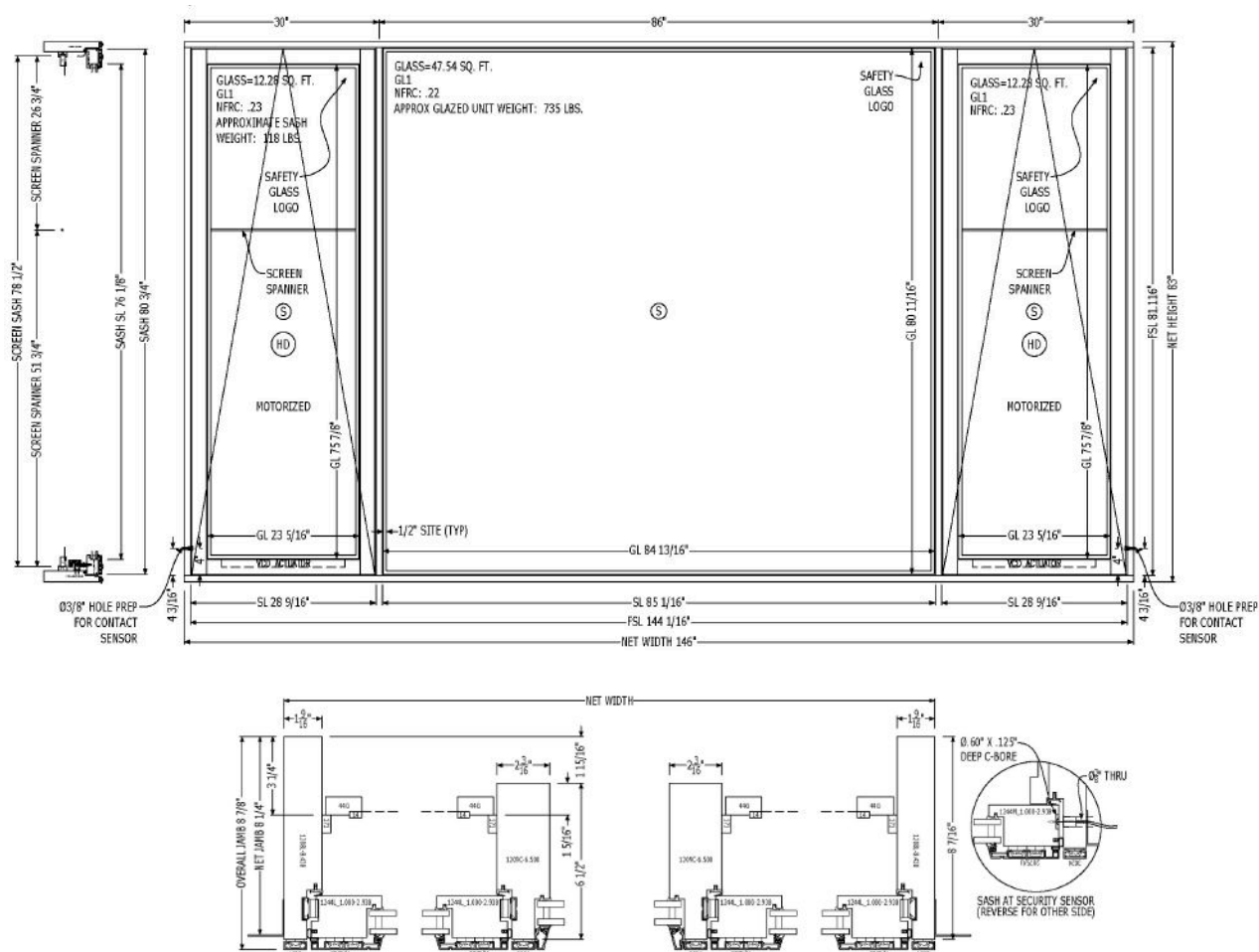
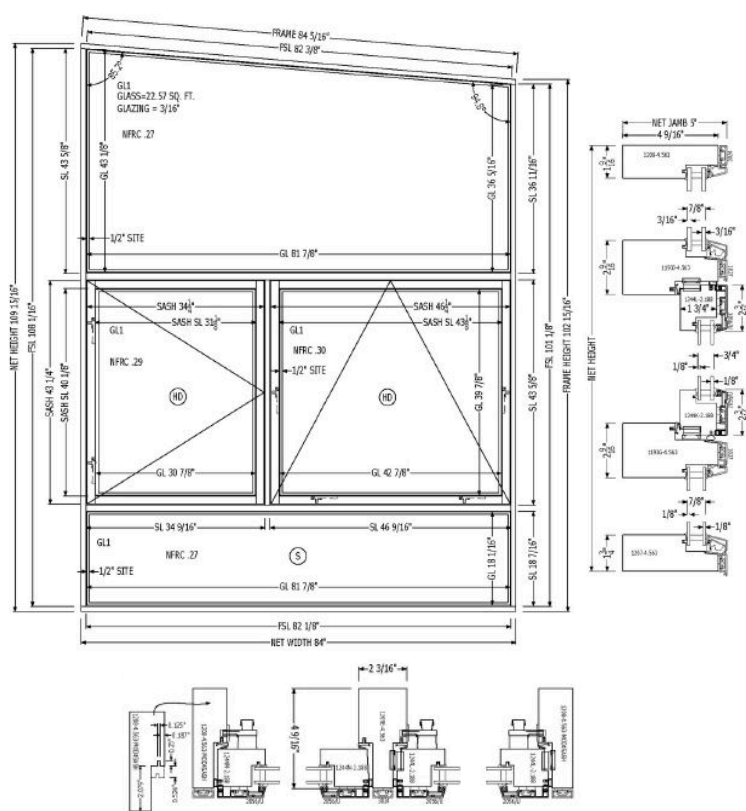
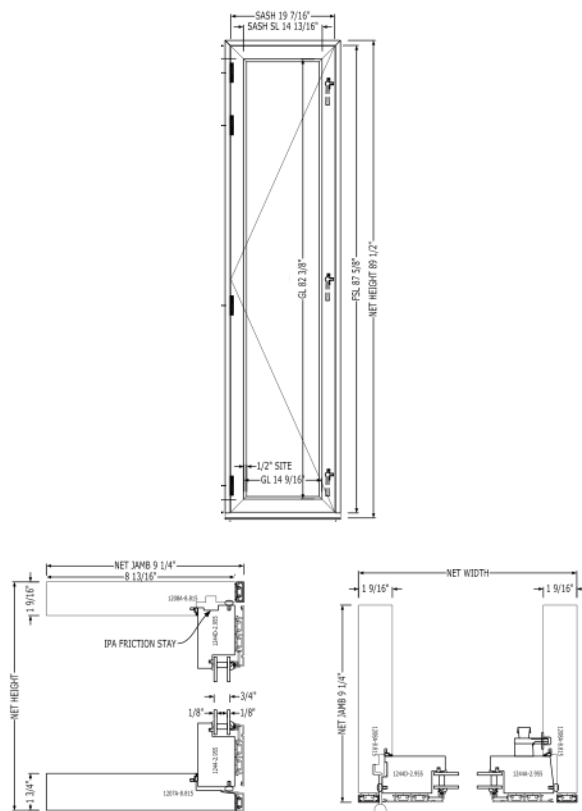
### Active Options

Available in roto, multi-point, push out, or motorized.



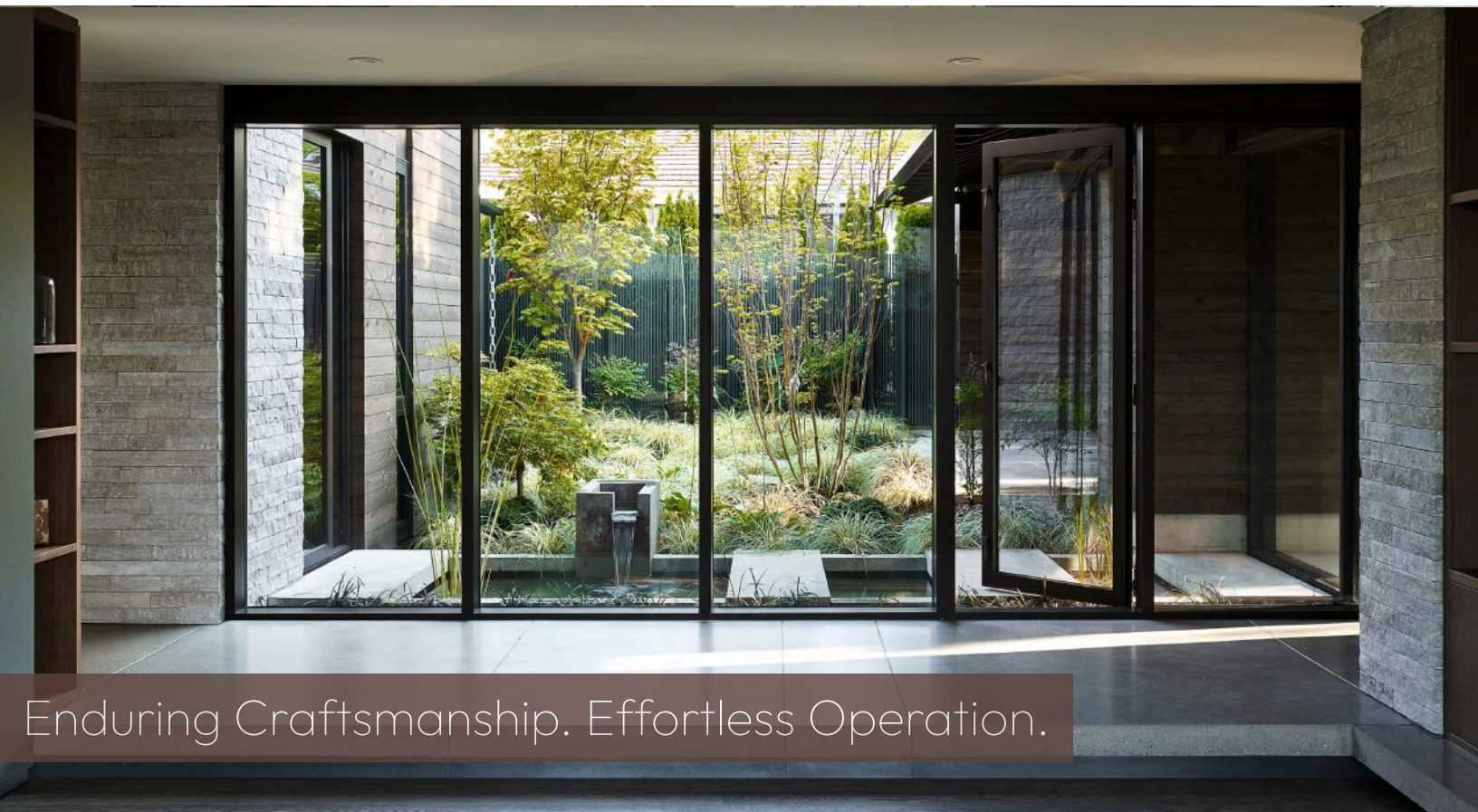


# Examples





# Hinged Doors



Enduring Craftsmanship. Effortless Operation.

Quantum's wood/clad hinged doors blend the inviting beauty of wood with the lasting strength of modern engineering. With wood interiors and aluminum-clad exteriors, they offer smooth operation, lasting strength, and refined detailing. Featuring high-performance hardware and customizable finishes, these doors adapt to any design vision. Whether it's a bold entry or a subtle connection to outdoor living, these doors deliver tailored performance and enduring beauty.



## Thermal Performance

Hinged doors form a secure, airtight seal when closed allowing for optimal thermal performance. Dual-pane configurations achieve **U-values as low as 0.22**, while triple-pane options can reach **0.20** for enhanced thermal efficiency.

## Versatile Configurations

Available as single or double, inswing or outswing, with optional sidelites and transoms. Sizes reach up to **48" wide** and **144" tall** for maximum design flexibility.

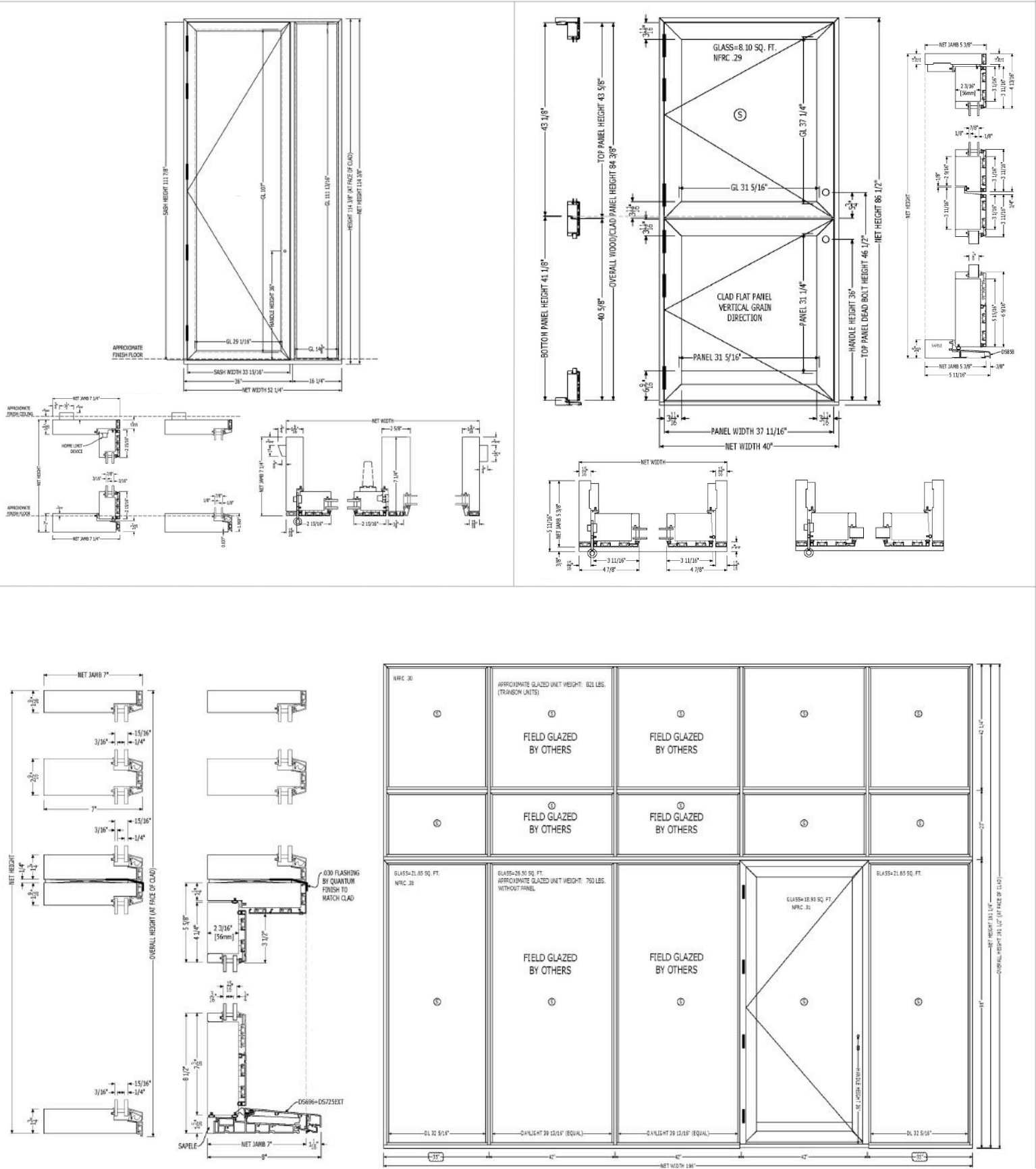
## Solid Construction

Stile & rail hinged doors are crafted with precise dowel joinery for enduring, time-tested strength. Optional heavy-duty concealed hinges further enhance performance, ensuring smooth operation and a clean, streamlined appearance.



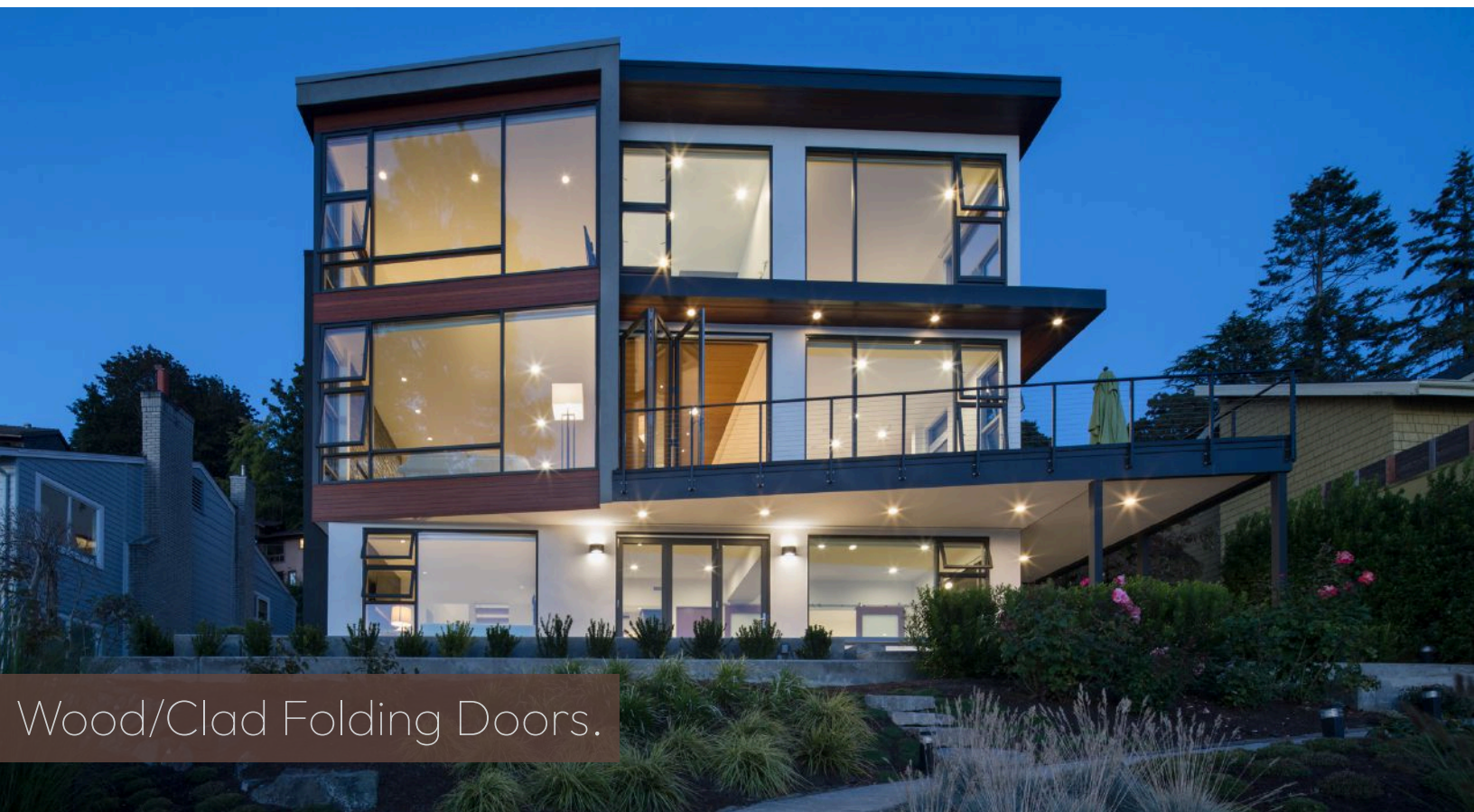


Examples





# Bi-Fold Systems



## Wood/Clad Folding Doors.

When closed, bi-folding doors appear to be a wall of beautiful, hinged doors. Fold open the doors and the wall virtually disappears leaving an unobstructed opening capable of spanning over 64 feet. Panels fold smoothly to one or both sides, creating flexible thresholds ideal for patios and open living. A multitude of configurations are available for these doors.

### Effortless Operation

Precision-engineered hardware delivers smooth, reliable panel movement with secure locking. Premium guides, carriers, wall pivots, and hinges work in harmony, allowing panels to glide effortlessly in unison.

### Expansive Openings

Panels fold to one or both sides, creating wall-to-wall openings. Configurable from 2 to 16 panels, with sizes up to **42" wide** and **144" tall**, with a maximum panel weight of **250 lbs** and configurations up to **8L + 8R**.

### Cornering Capabilities

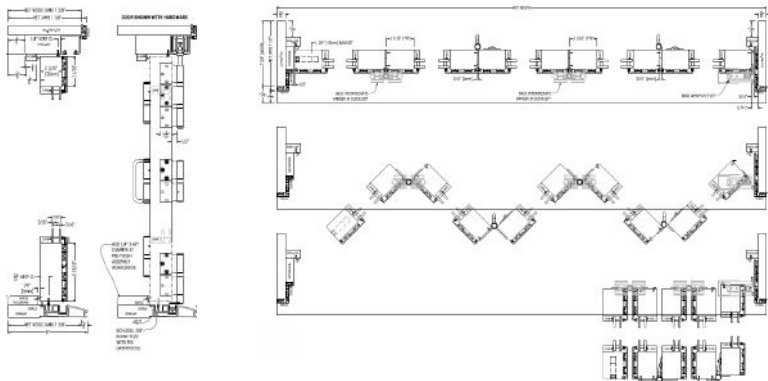
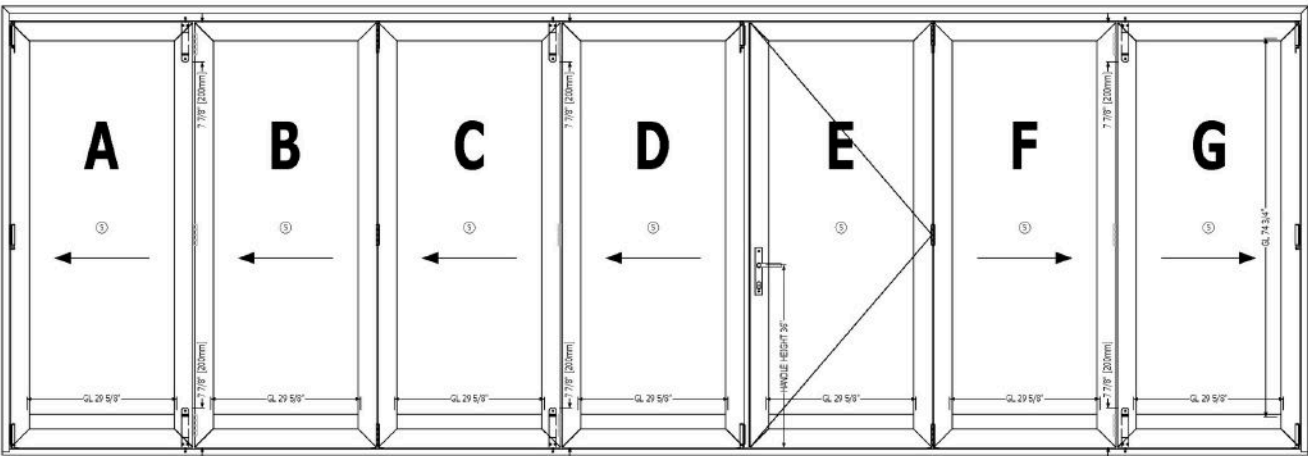
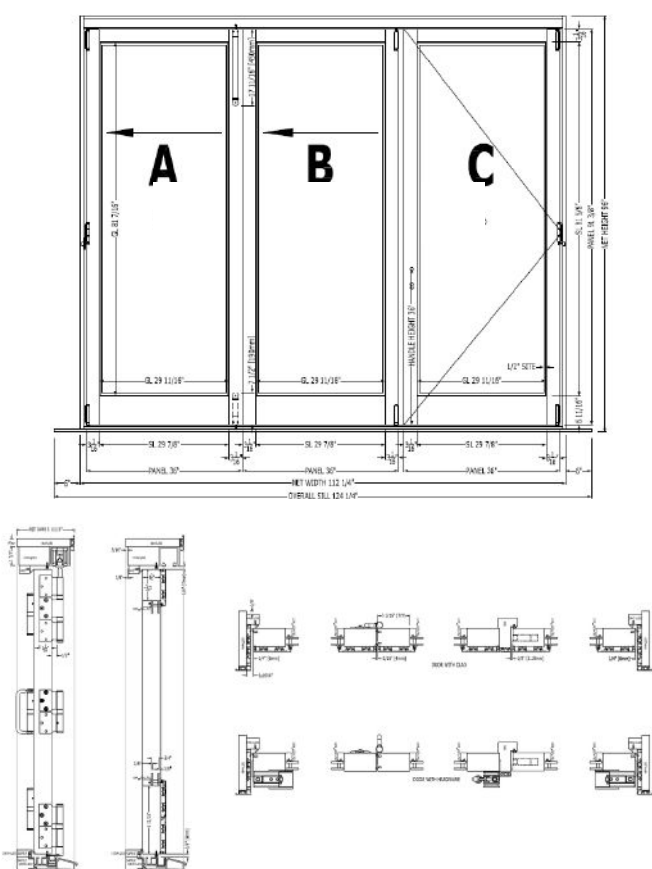
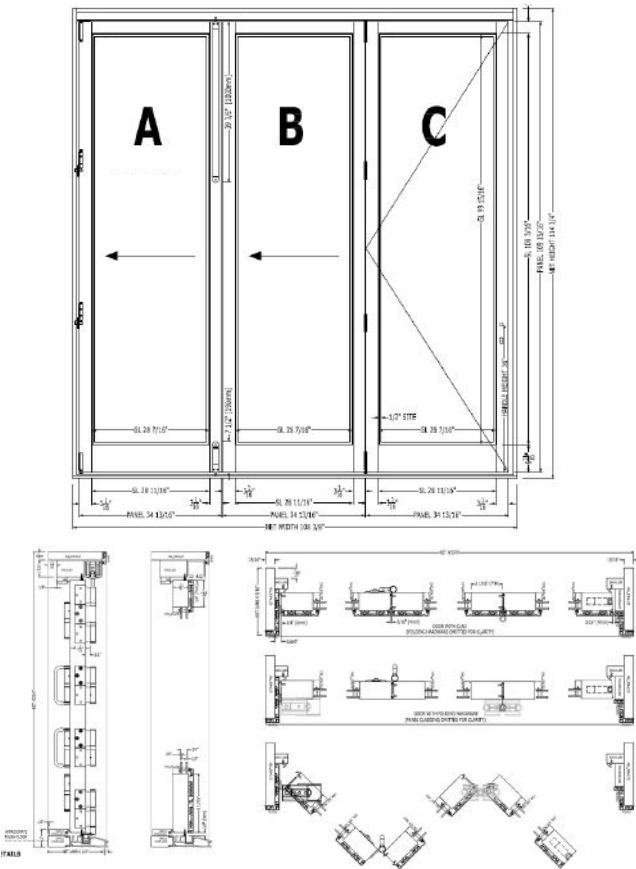
Bi-fold door systems can be designed as cornering units, allowing entire corners of a home or building to fully open and seamlessly close off when desired.





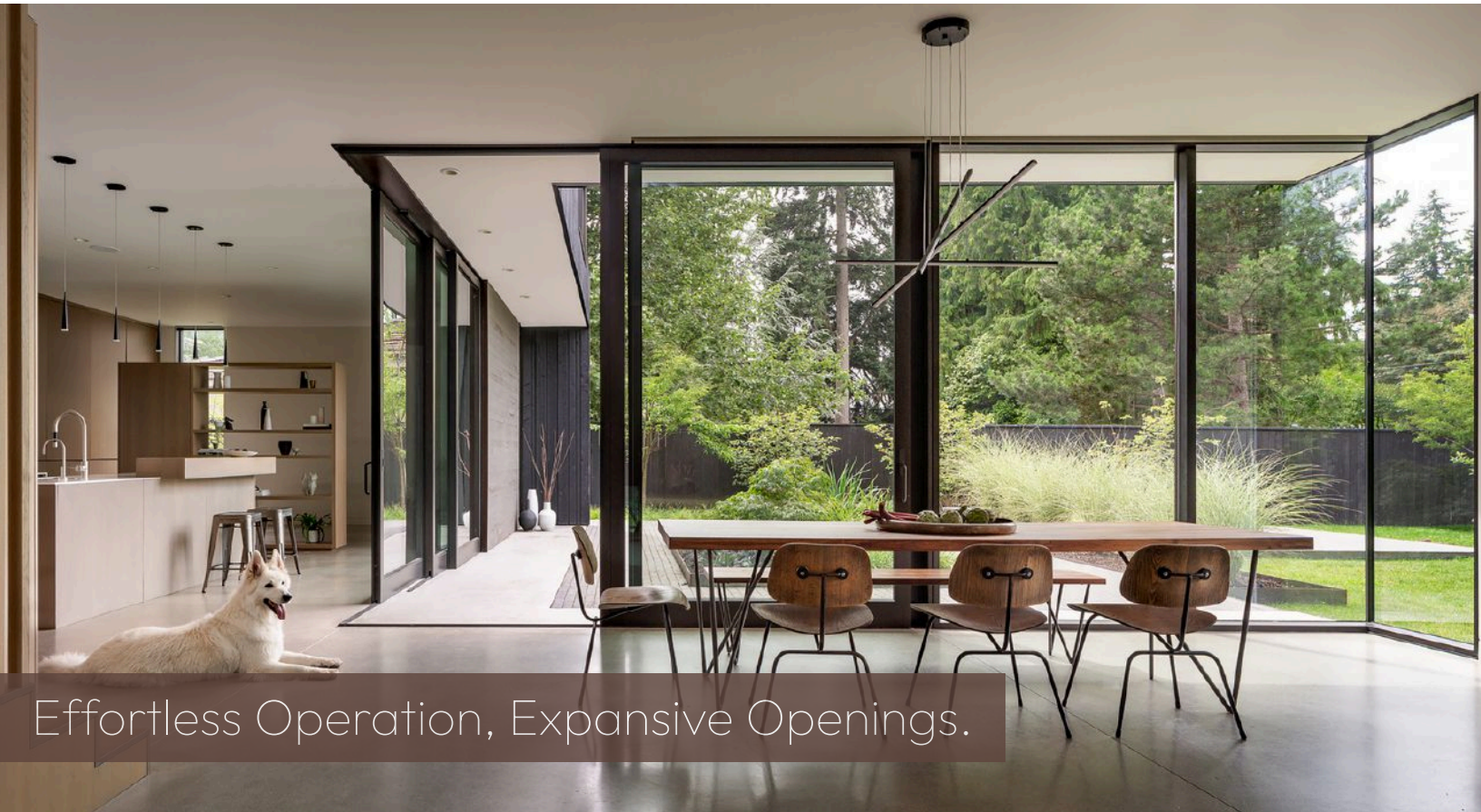


# Examples



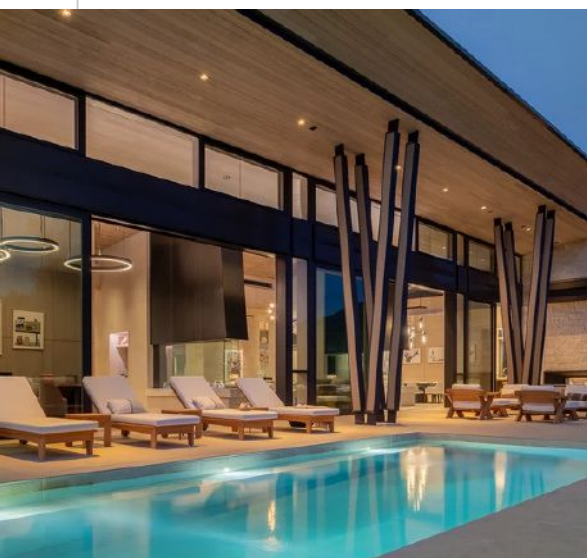


# Lift & Slide Systems



Effortless Operation, Expansive Openings.

Quantum's lift & slide wood/clad doors create effortless transitions and expansive openings. Large glass panels glide smoothly on multi-wheel carriages, secured by robust multipoint locks for lasting performance and ease of use. Perfect for terraces or poolside settings, each system amplifies light, space, and the architectural flow of any environment.



## Large Panel Capabilities

Lift & slide doors can support expansive panels up to **1300 lbs**, allowing for breathtaking views and wide, operable glass walls.

## Smooth-Glide Mechanism

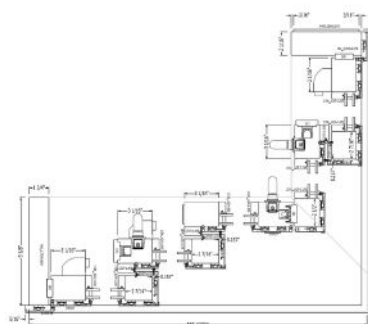
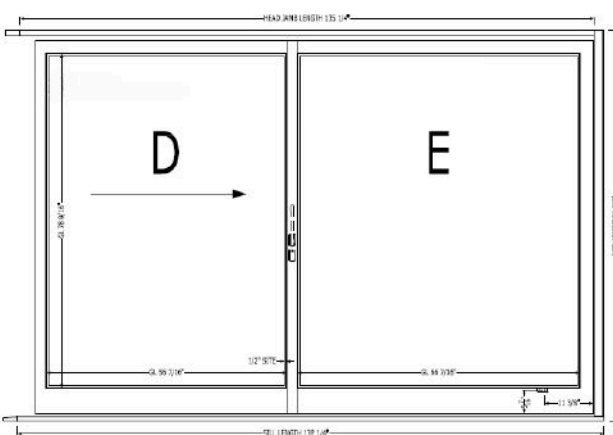
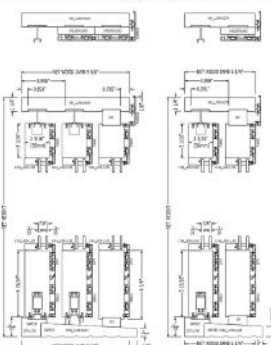
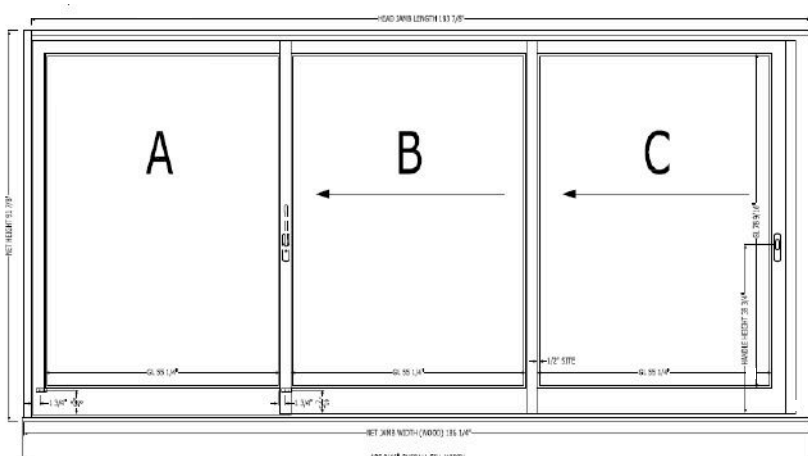
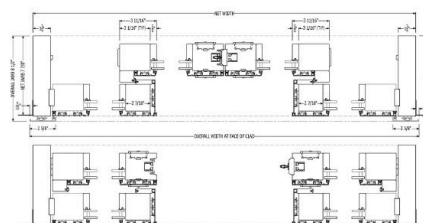
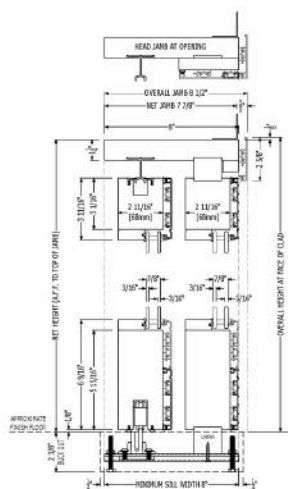
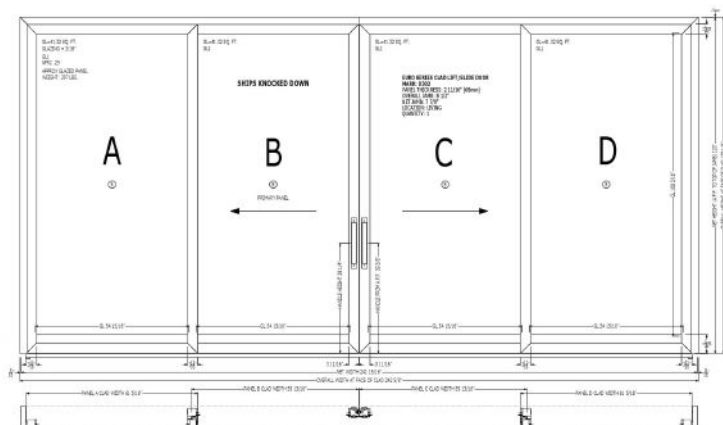
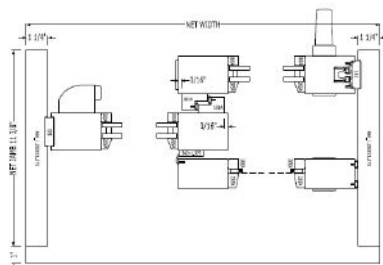
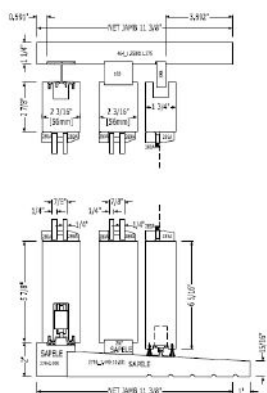
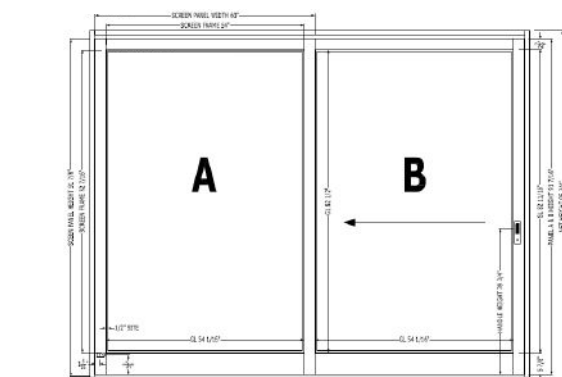
Within a **3:1 height/width panel ratio**, lift hardware reduces friction and lifts the panel off the sill for effortless movement.

## Cornering & Pocketing Capabilities

Cornering configurations are available for lift & slide doors, with panels meeting at the corner to form a secure, airtight seal. When paired with pocketing configurations, panels completely vanish, opening up the entire corner of a home or building.



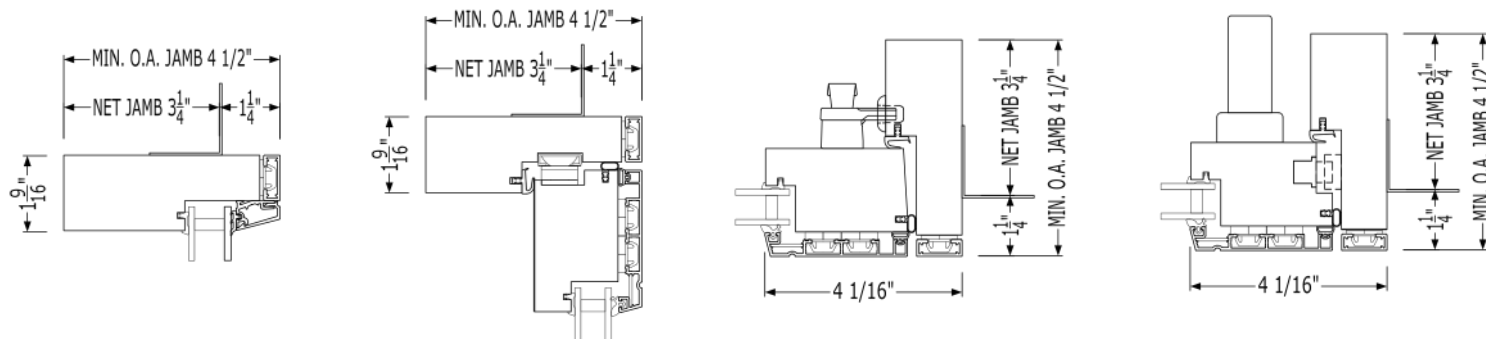
# Examples





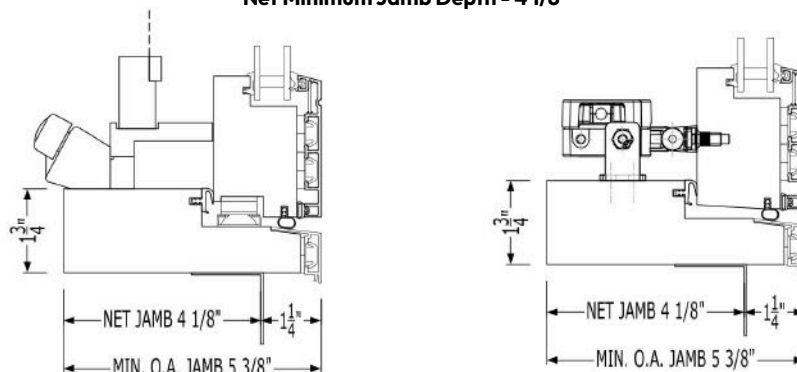
Direct Glazed/ Fixed Sash/ Push Out/ Multi Point

**Net Minimum Jamb Depth - 3 1/4"**



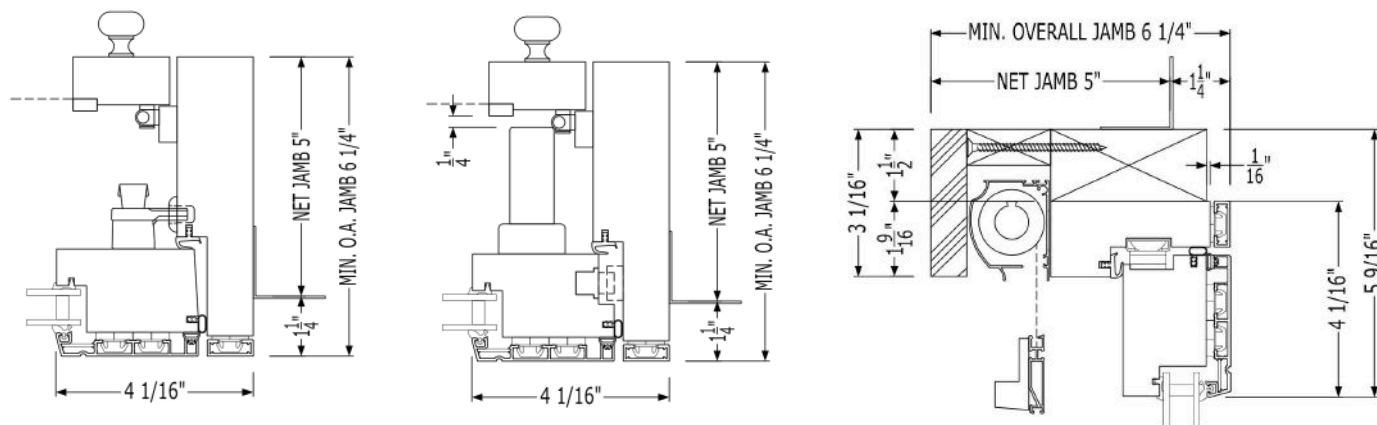
Roto With Screen/ Motorized Without Screen

**Net Minimum Jamb Depth - 4 1/8"**



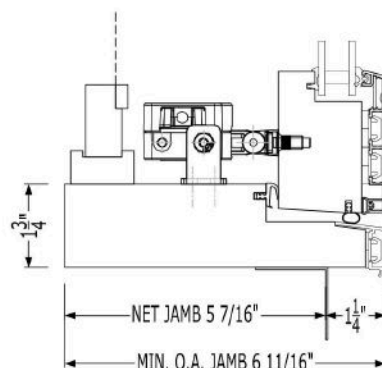
Push Out & Multi Point With a Screen/ Concealed Screen

**Net Minimum Jamb Depth - 5"**



Motorized With a Screen

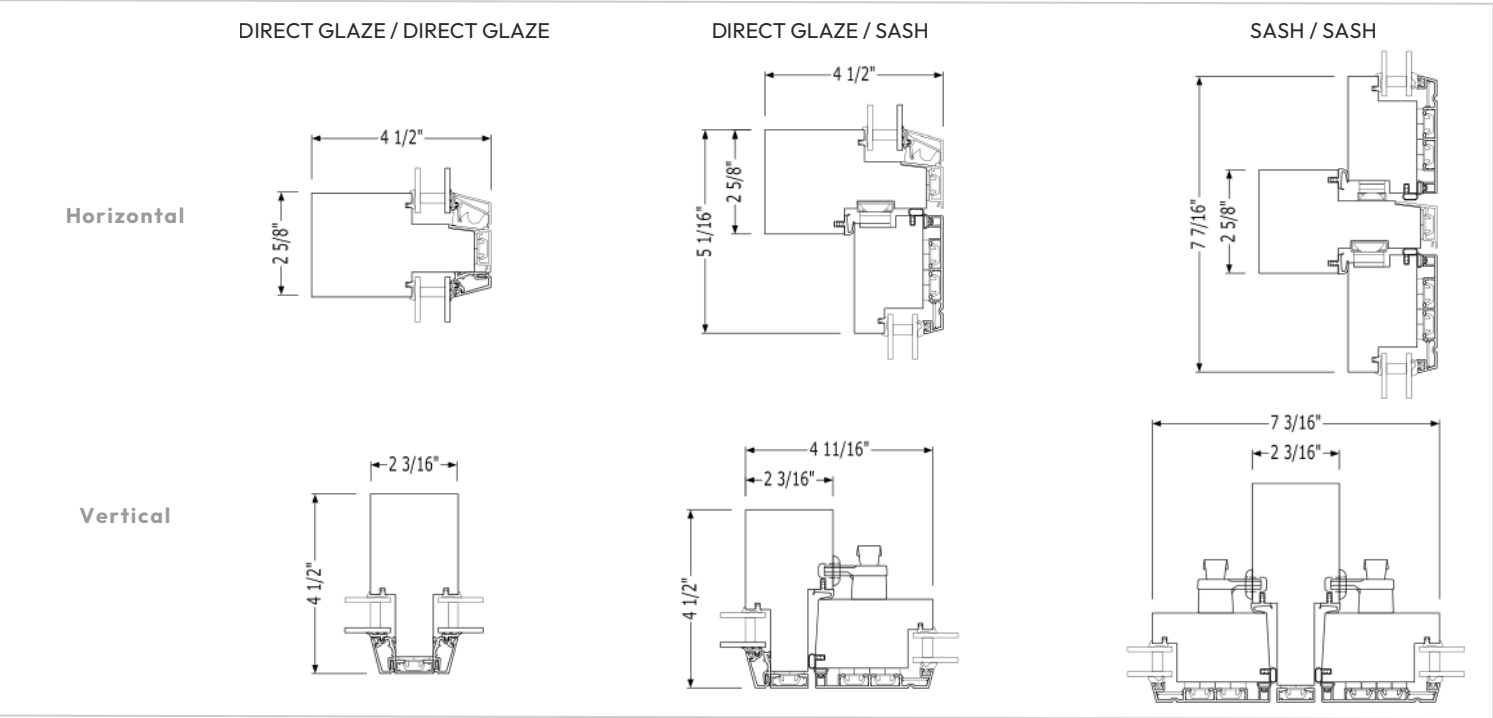
**Net Minimum Jamb Depth - 5 7/16"**





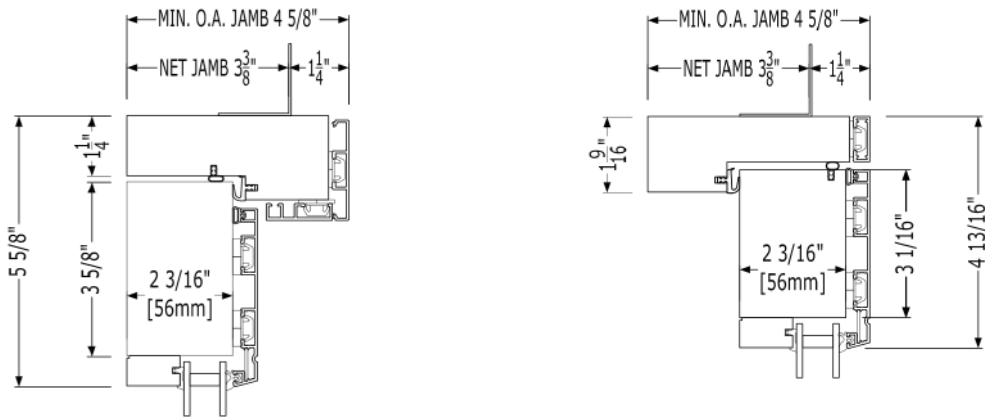


Vertical & Horizontal Mullion Options



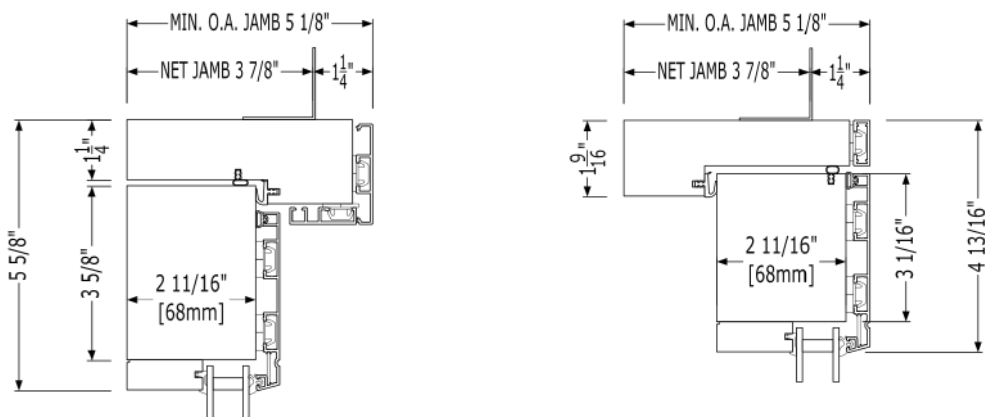
Inswing/ Outswing 56mm Hinged Door

Net Minimum Jamb Depth - 3 3/8"

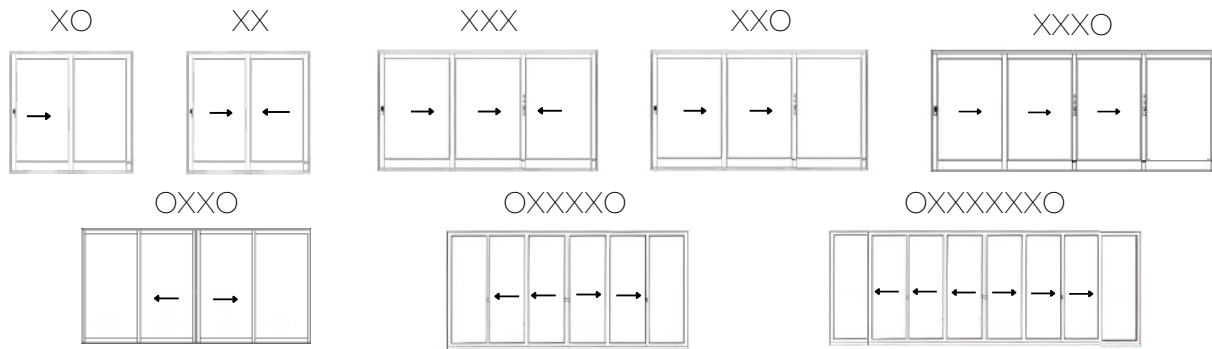


Inswing/ Outswing 68mm Hinged Door

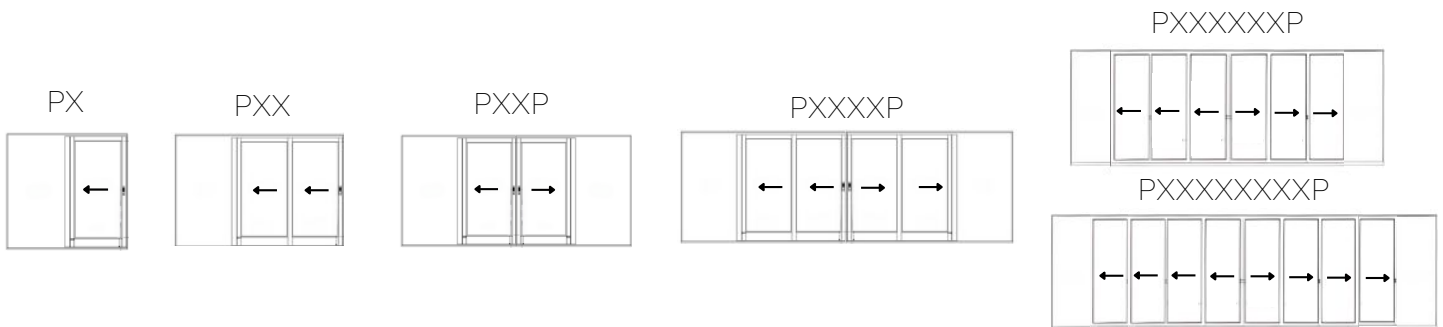
Net Minimum Jamb Depth - 3 7/8"



### Lift & Slide Configurations



### Pocketing Configurations



### Bi-Fold Configurations



**Please Note: Cornering configurations are available for both Lift & Slides and Bi-Folds. Pocketing configurations are also available for Lift & Slides.**





Core Options



Solid



Engineered

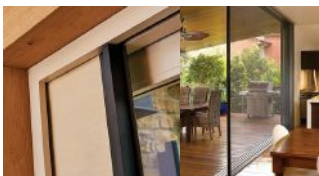


Q-Core®

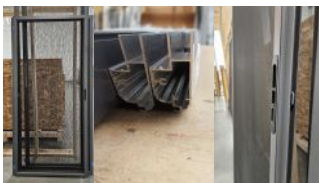
Door Screen Options



Stile & Rail Panel Screen



Centor Screen



Exterior Aluminum Roller Screen

Window Screen Options



Concealed Roll



Inswing



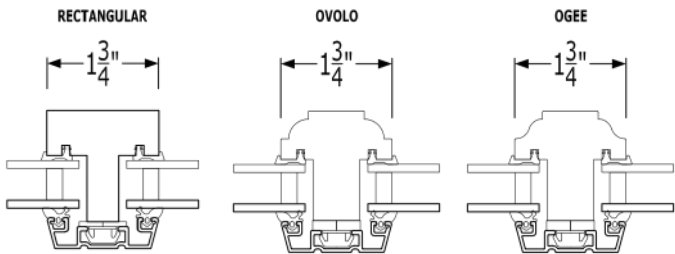
Fixed



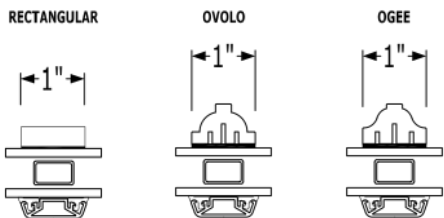
Fixed Aluminum

Divided Lites

True Divided Lite - TDL



Simulated Divided Lite - SDL



Bi-Fold Hardware



Wall Pivot

Hinge With Handle

Guide

Carrier

Hinge

Dropbolt



Stainless Steel



PVD bronze/black

Please note: Dropbolt is not available in stainless steel. Substitute finish is natural anodized. Brass finish available for all hardware upon request.

## Window Hinged Options

Heavyweight Hinge



Satin Nickel



Matte Black

Concealed Four Bar Hinge



Stainless Steel

IPA Hinge



Black (9005 FS)

## Door Hinged Options

Heavyweight Hinge



Satin Nickel



Matte Black

IPA Hinge



Black (9005 FS)

## Lift & Slide Hardware

Construction - Multipoint



Clear Anodized



Bronze Anodized

Dallas - Multipoint



Matte Black



Rustic Umber



Satin Nickel

RMH Folding Handle - Multipoint

White Bronze



Brushed



Light



Medium



Dark



High-Polished



Silicon Bronze



Light



Medium



Brushed



Dark



Dark-Lustre



High-Polished



Bron Rust

## Window Hardware

Pushout



Satin Red Bronze



White Bronze/Satin Nickel



Oil Rubbed Bronze



Black (Metal)



Oil Rubbed Bronze (Metal/Plastic)



Satin Nickel (Metal/Plastic)



Matte Black (Plastic)

Roto



Multipoint Pushout



Matte Black



Rustic Umber



Satin Nickel

## Hinged Door Hardware

Construction Multipoint



Chestnut Bronze



Clear Anodized



Dallas Multipoint



Matte Black



Rustic Umber



Satin Nickel



Custom Multipoint

White Bronze



Brushed



Light



Medium



Dark



High-Polished



Silicon Bronze



Light



Medium



Brushed



Dark



Dark-Lustre



High-Polished



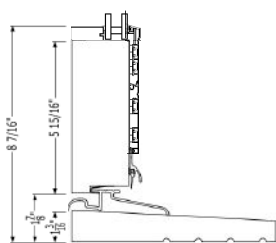
Bronze - Rust



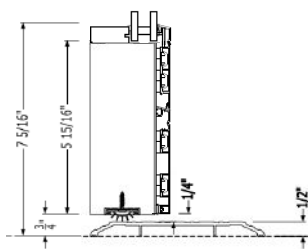
## Hinged Door Sill Options

### Inswing

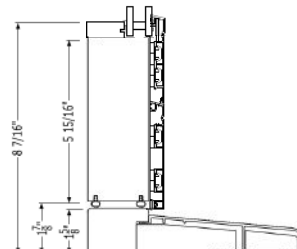
Wood Sill/Interlocking Threshold



Aluminum ADA

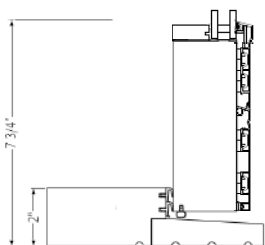


Thermally Broken Draft Sill

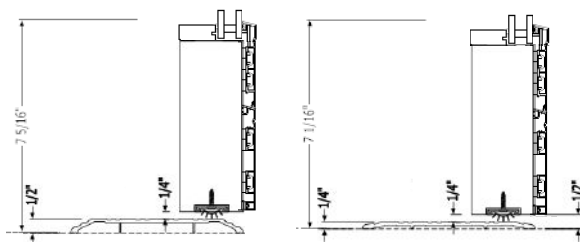


### Outswing

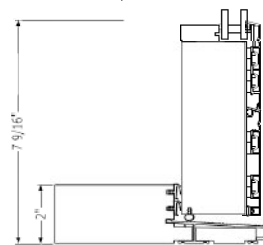
Wood Bumper Sill



Aluminum ADA

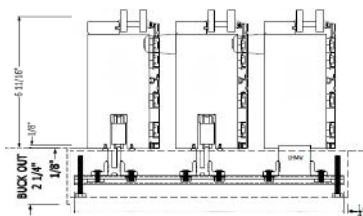


Thermally Broken Bumper Sill

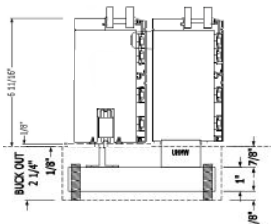


## Lift and Slide Sill Options

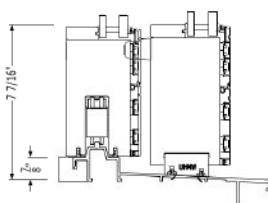
Draining Mudsill



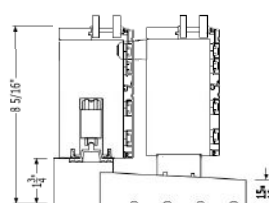
Non-Draining Mudsill



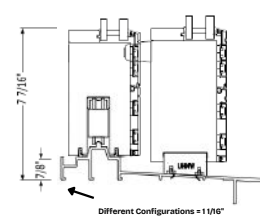
Thermally Broken Aluminum/Wood Sill



Wood Sill W/ Aluminum Tracks

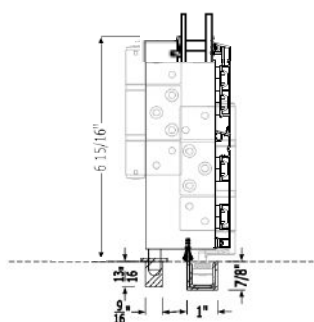


Aluminum Sill

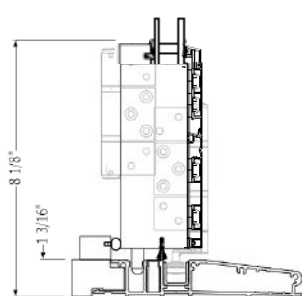


## Bi-Fold Sill Options

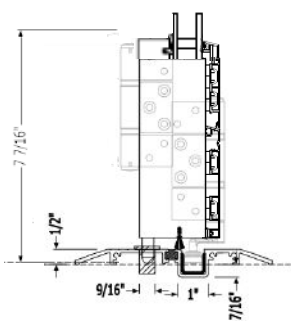
Channel



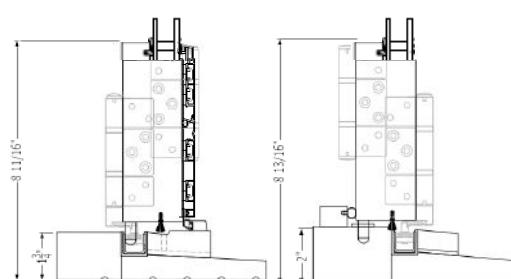
Aluminum Self Draining (Outswing Only)



Aluminum ADA



Wood Sill













# All Wood Systems

## Natural Warmth Meets Timeless Craftsmanship.

Quantum's all-wood systems express architectural beauty through materials of enduring quality. Crafted inside and out from premium hardwoods and softwoods—including Teak, Sapele, Red Grandis, Rift Sawn White Oak, and Clear Vertical Grain Douglas Fir—each window and door combines contemporary styling with the natural warmth and character of fine wood.

These handcrafted products feature refined joinery, bold proportions, and a tailored finish that brings architectural visions to life.

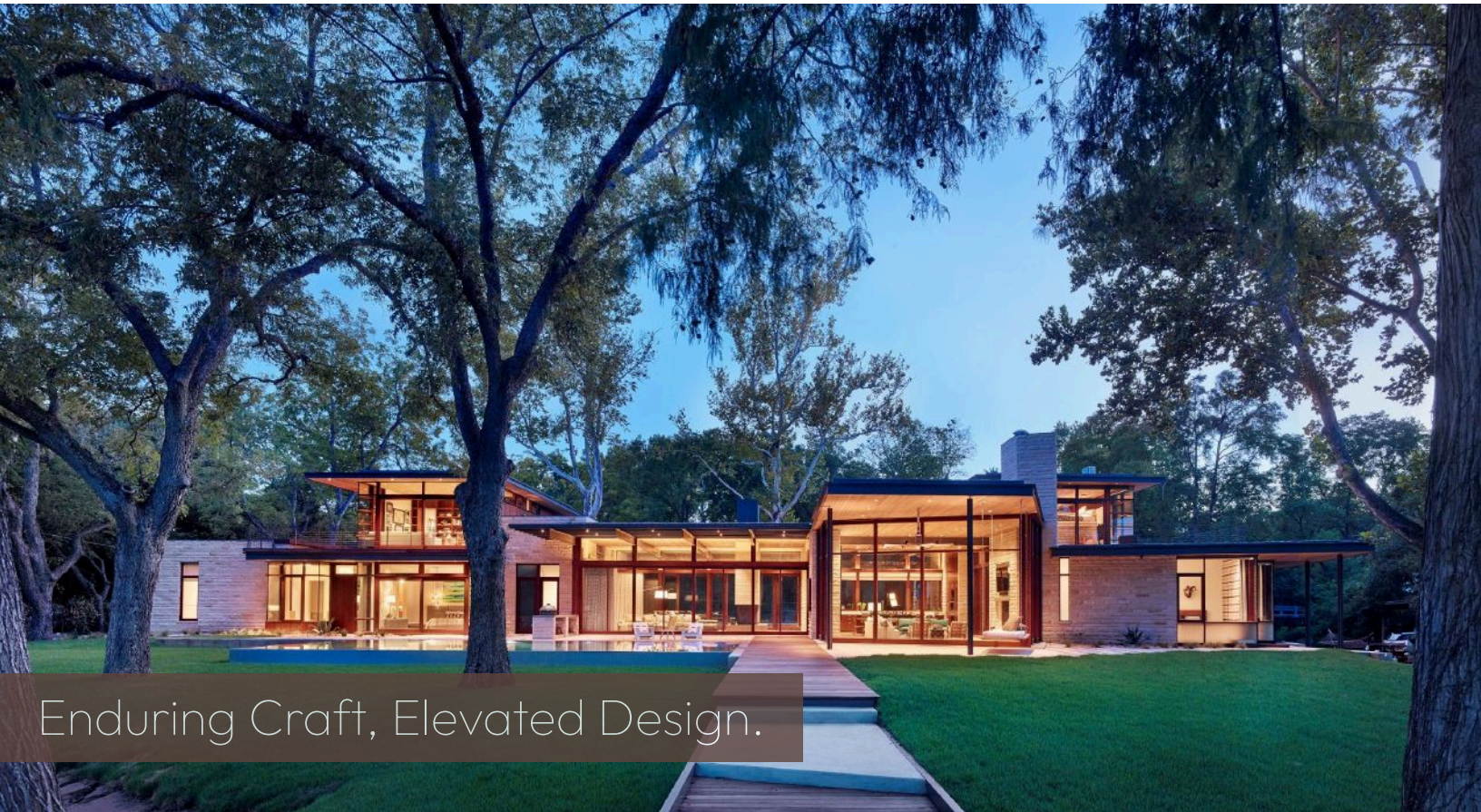
Available in split species as well, these systems provide unparalleled flexibility, allowing any design concept to take shape. They empower architects and designers to craft truly distinctive windows and doors that celebrate both creativity and craftsmanship.







# Picture Windows



Enduring Craft, Elevated Design.

Quantum's Classic Series all wood picture windows combine timeless craftsmanship with lasting durability. Made from hand-selected, premium wood, each window is as impressive on the outside as it is beautiful from inside the home. With all wood construction, dual-seals and Low-e coatings, picture windows offer exceptional insulation along with their stunning design.



## Thermal Performance

All-wood picture windows are crafted to meet high thermal performance standards, with dual-pane configurations achieving **U-values as low as 0.20** and triple-pane options reaching **0.16**—ensuring comfort and efficiency in any climate.

## Large Sizes

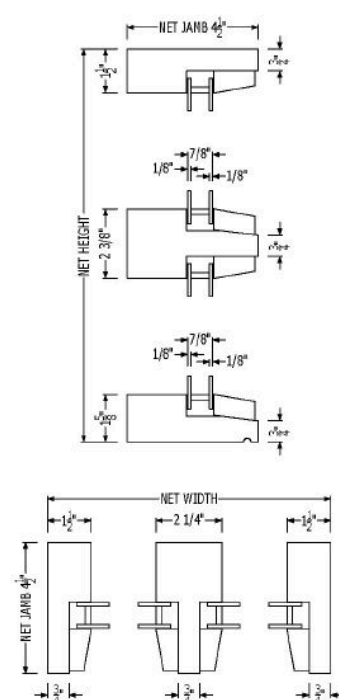
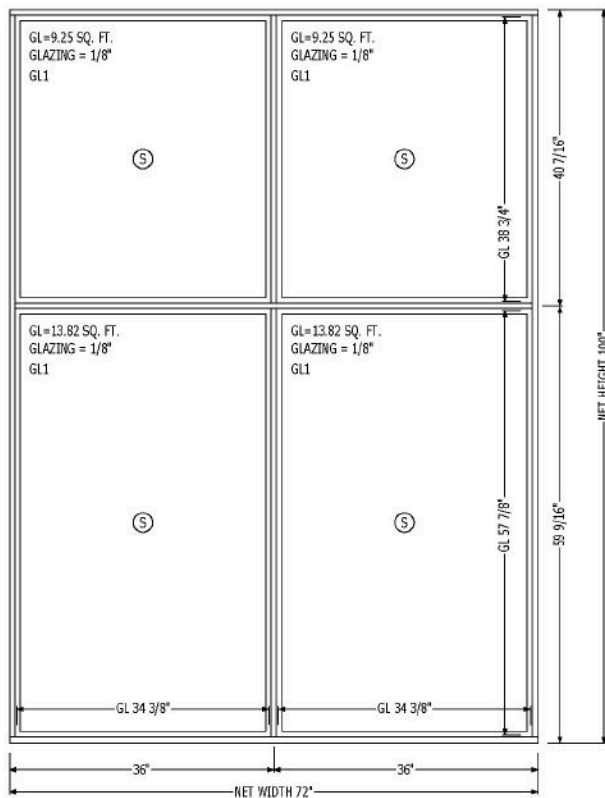
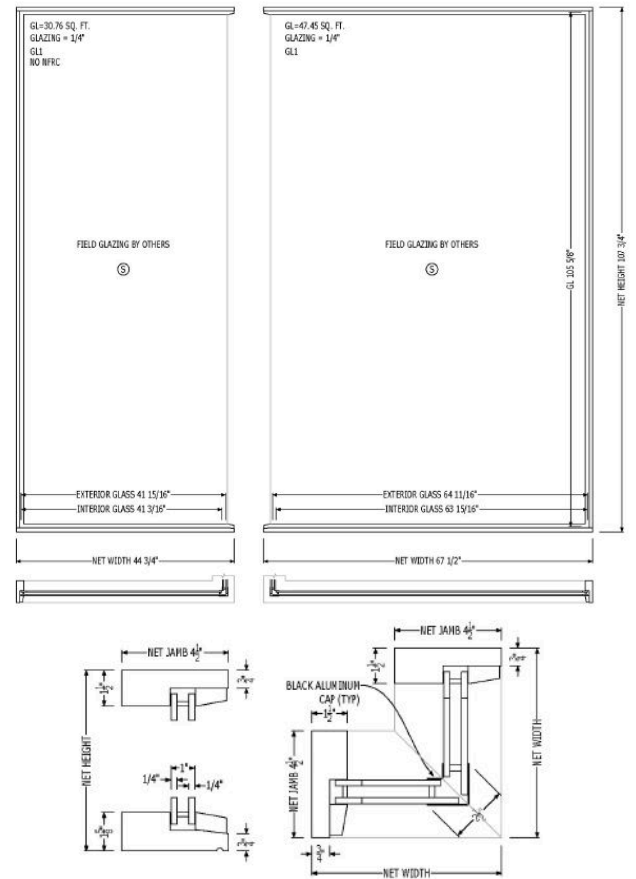
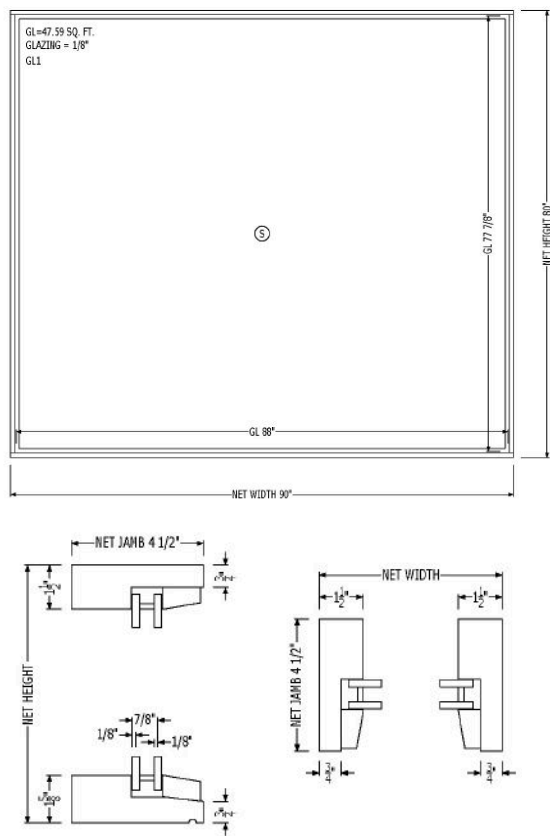
Quantum's all-wood picture windows can span up to an impressive **259 sq. ft.** Offering expansive, uninterrupted views.

## Strength

All-wood picture windows are engineered to achieve exceptional design pressure (**DP**) ratings of **65**, ensuring superior structural performance and reliability.



# Examples





# Active Windows



Functional Fenestration.

Quantum's Classic Series all-wood active windows combine timeless beauty with versatile design. With a wide range of styles and finishes, these fully operable windows bring elegance and functionality to any space. Crafted from the finest wood, they open effortlessly to welcome fresh air and brighten every room.



## Energy Efficiency

Crafted for exceptional thermal performance, all-wood active windows offer **U-values as low as 0.23** with dual glazing and **0.20** with triple glazing—preserving comfort and efficiency across every climate.

## Large Sizes

All-wood casement and awning windows are available with sash sizes up to **40 sq. ft.**, delivering generous openings and bold design possibilities without sacrificing strength or elegance.

## Strength

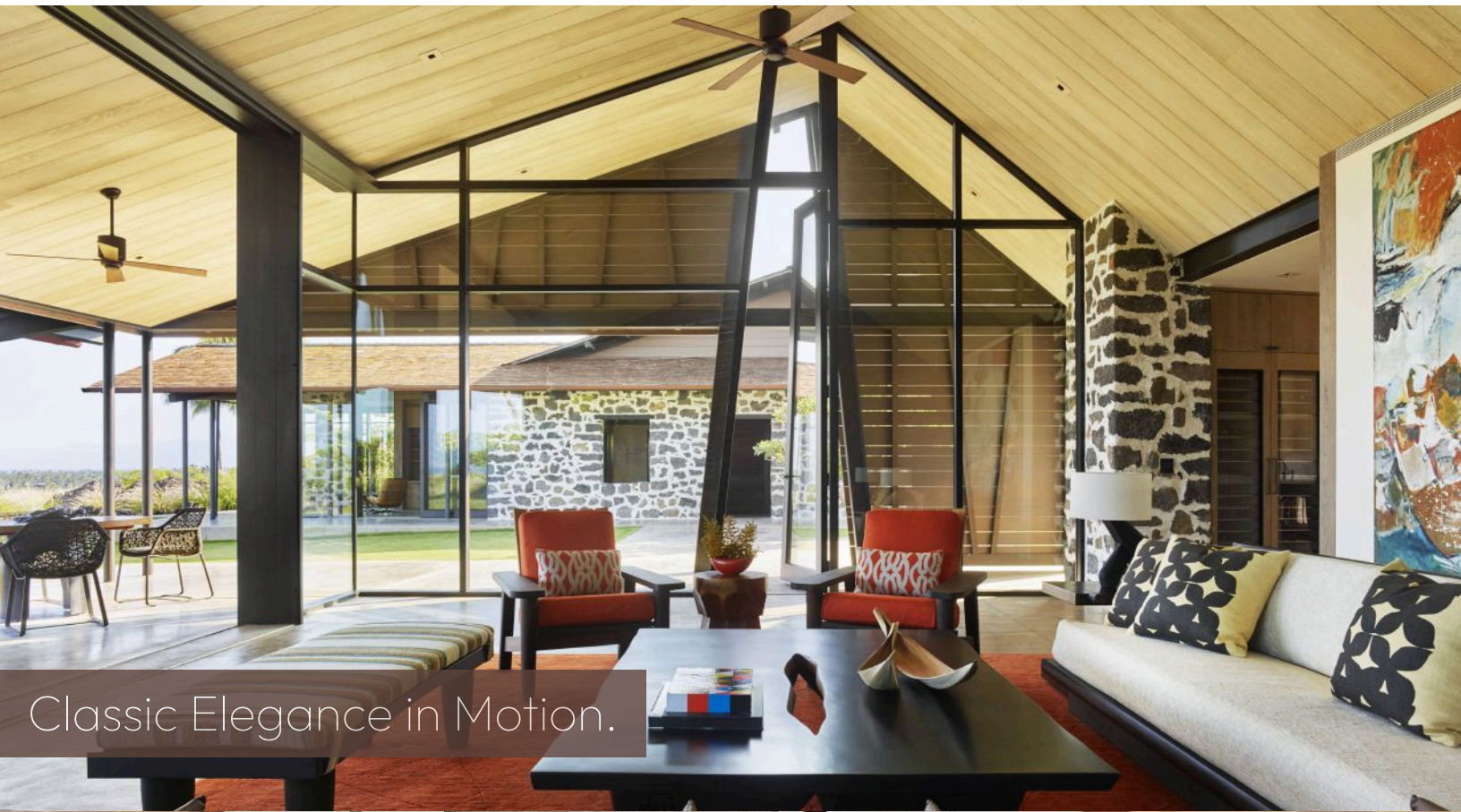
All-wood active windows from Quantum are thoughtfully engineered to meet design pressure **(DP)** ratings of **45**, enabling lasting performance and resilience.







# Hinged Doors



Classic Elegance in Motion.

Quantum's all-wood hinged doors merge artisanal craftsmanship with architectural versatility. Offered in a plethora of styles, they provide a canvas for refined expression. With a broad selection of hinge types, configurations, and hardware options, these doors are designed to adapt seamlessly—without ever compromising on style or performance.



## Energy Efficiency

All-wood hinged doors meet high thermal standards, with **U-values as low as 0.23** for dual pane and **0.21** for triple pane, ensuring well-insulated spaces and code compliance.

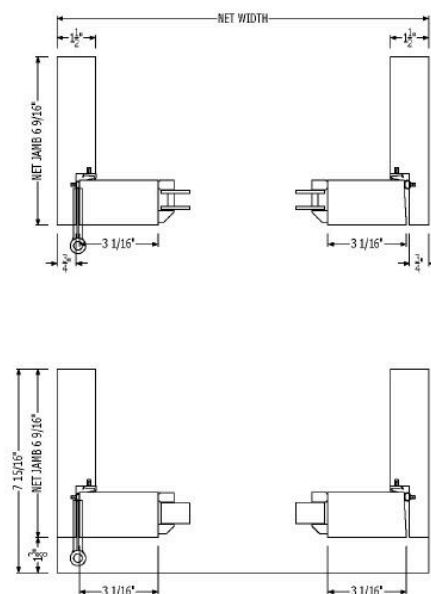
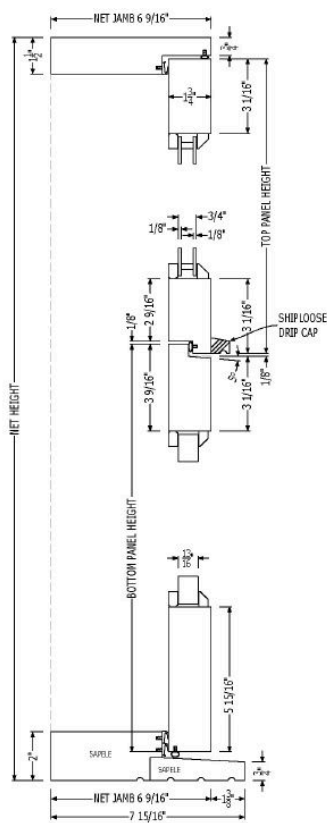
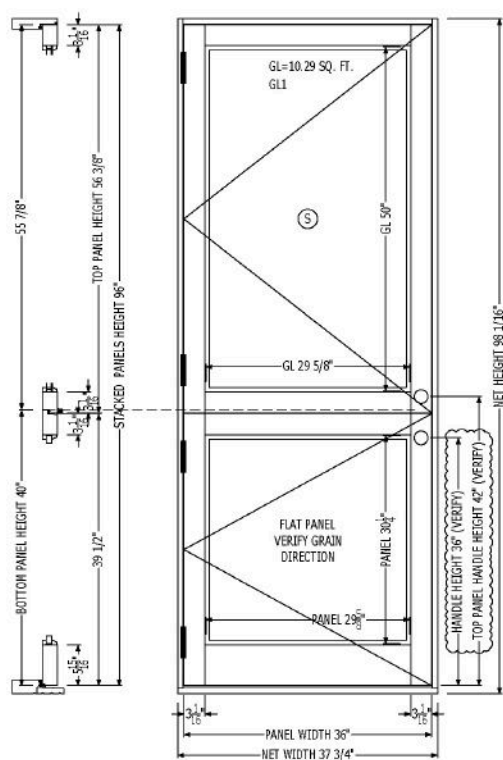
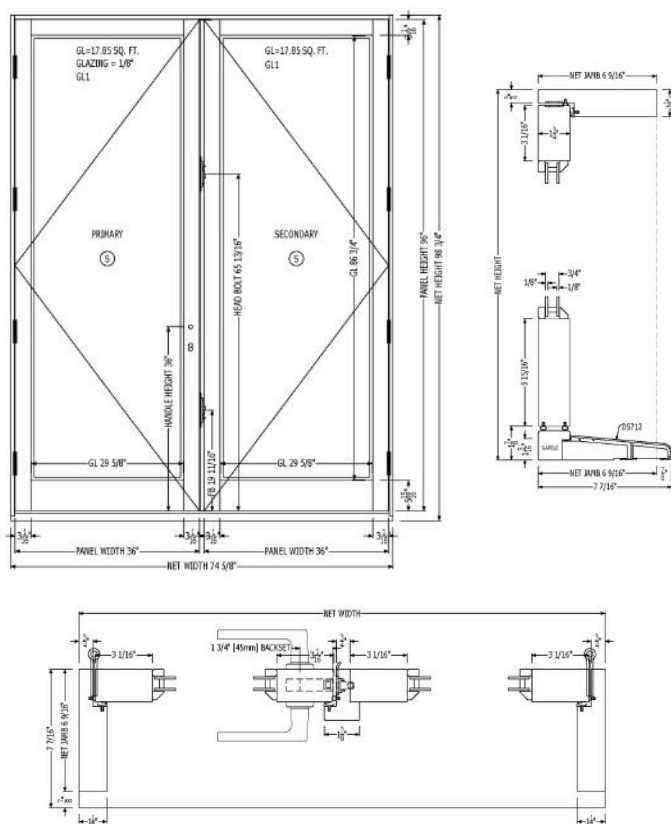
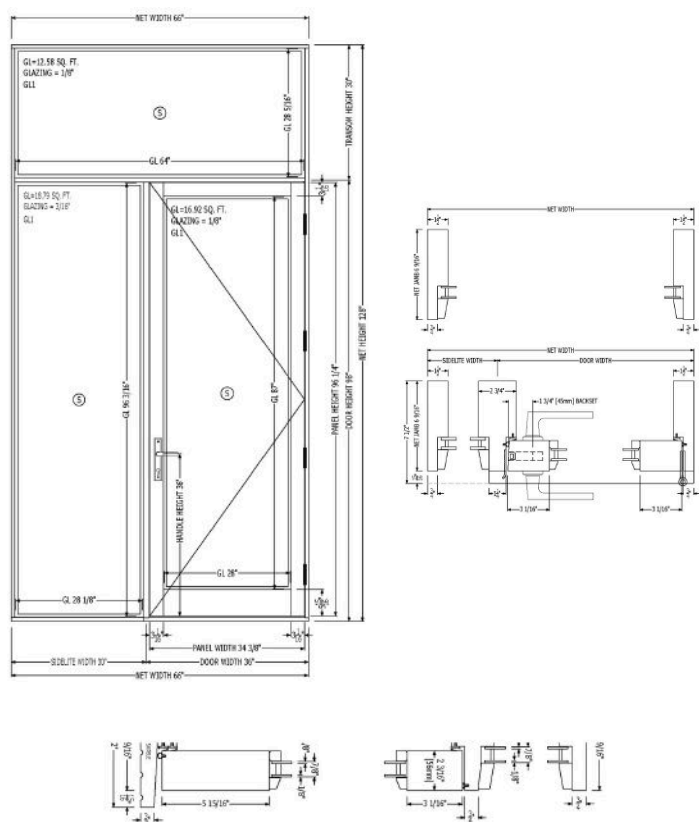
## Large Sizes

All wood hinged doors are available in sizes up to **144" tall** and **48" wide**, offering a bold architectural statement for any entry.

## Styles

All-wood hinged doors are available in a wide range of styles—including raised panel, stile & rail, flat panel, and tongue-and-groove—making it easy to complement the architectural character of any home.

# Examples





# Bi-Fold Systems



Crafted for Flow, Built for Warmth.

Quantum's all-wood bi-fold Systems offer a seamless balance of architectural beauty and functional performance. Each handcrafted panel folds away smoothly to reveal expansive openings that dissolve the boundary between indoors and out. Designed for elegant flexibility, these systems bring warmth, movement, and clarity to projects seeking true integration with the outdoors.

## Concealed Screen Option

Enhance livability without disrupting the view. Optional concealed screens offer protection when needed and retract into jamb when not in use, preserving clean sightlines.

## Open Possibilities

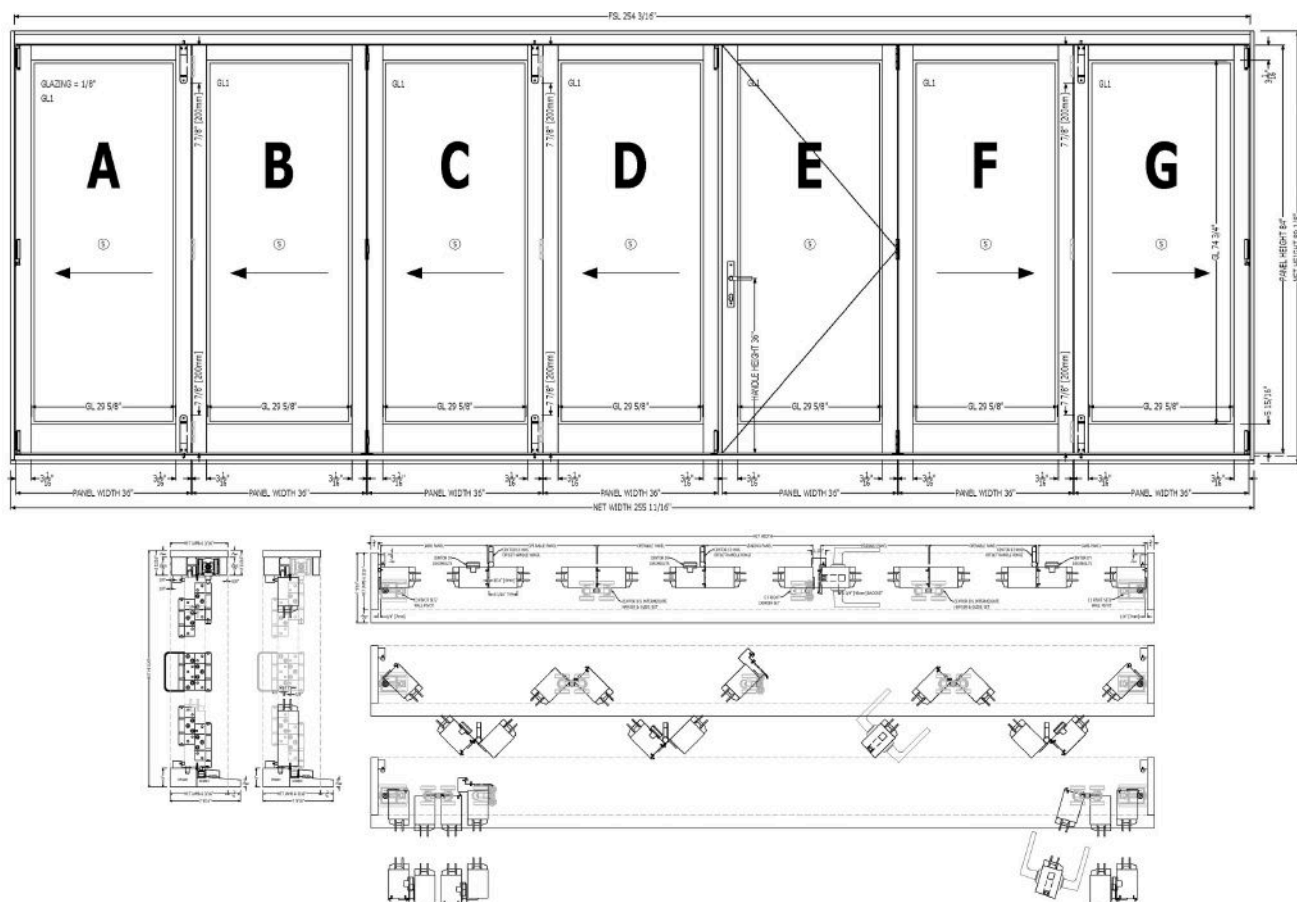
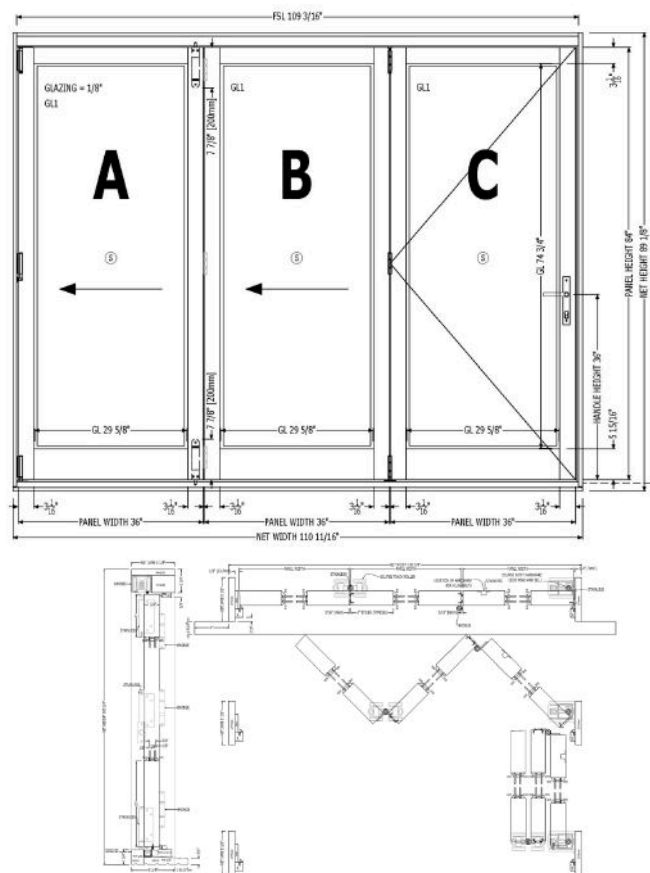
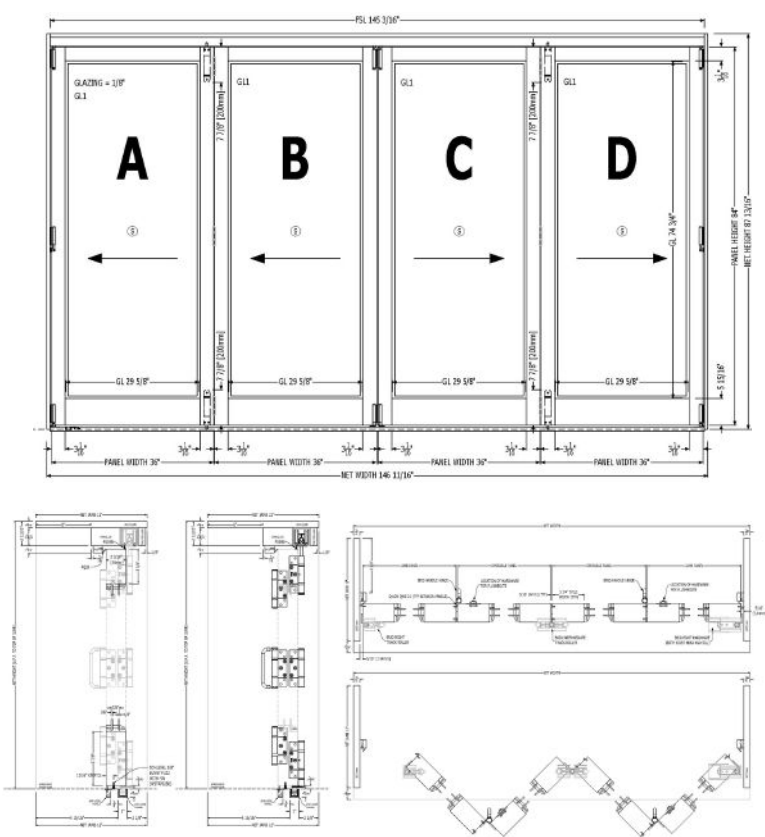
From patios to poolside pavilions, all-wood bi-fold systems deliver design flexibility. Configurations up to **8L + 8R**, create openings as wide as 16 panels across. Each panel can reach **42" wide, 144" tall**, and up to **250 lbs**, supported by precision-engineered hardware for smooth, reliable operation.

## Wood-Focused Performance

Multipoint locking, weather stripping, and robust panel construction deliver exceptional protection against the elements, while showcasing the natural beauty and strength of solid wood.



# Examples





# Lift & Slide Systems



Effortless Motion, Enduring Beauty.

Quantum's all-wood Lift & Slide Systems combine expansive views with effortless operation. Crafted from the finest hardwoods and designed for large-scale openings, these doors glide open with the lightest touch. With precision-engineered hardware and a variety of customizable configurations, each system offers exceptional functionality and design flexibility, making it a truly versatile solution for any living space.

## Sleek Panels

All-wood lift & slide doors support panels up to **1300 lbs**, with sizes reaching **over 120" wide and over 144" tall**. Profiles as slim as **56 mm** deliver a minimalist look while maintaining strength and functionality.

## Mudsill

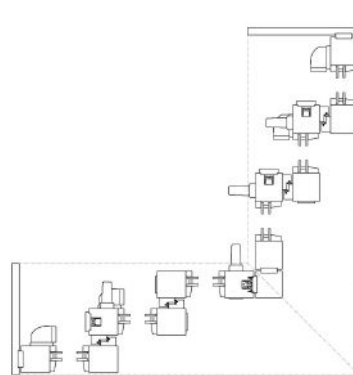
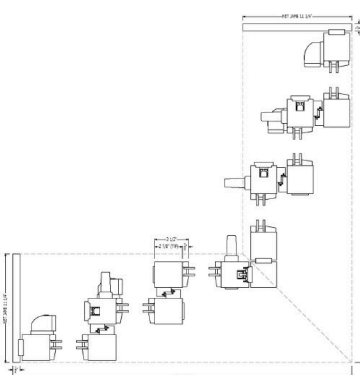
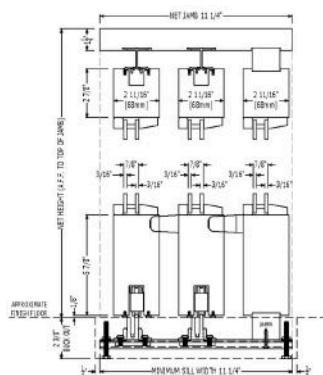
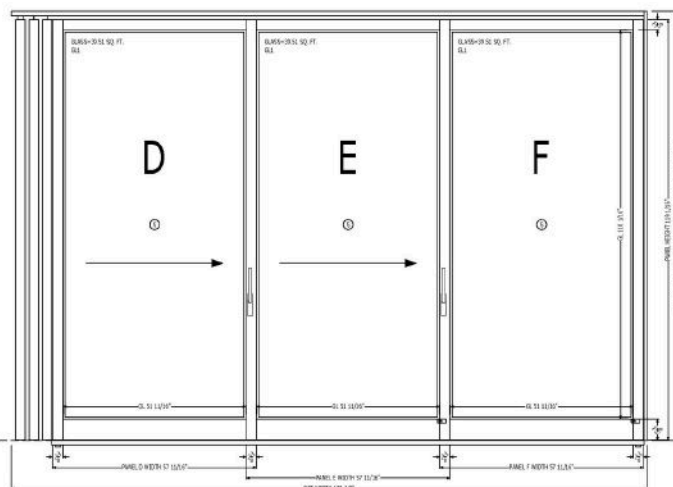
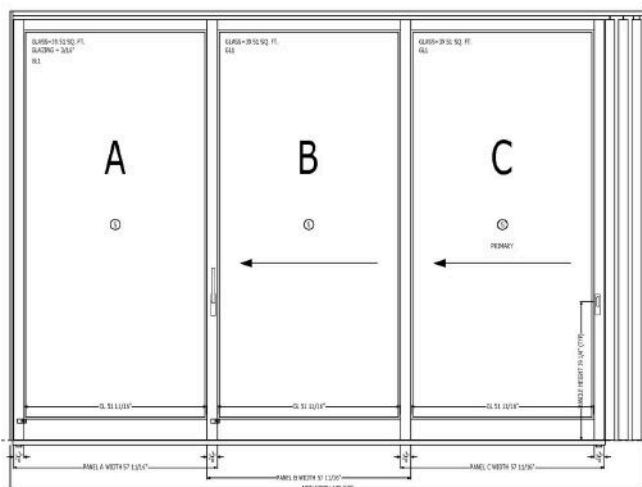
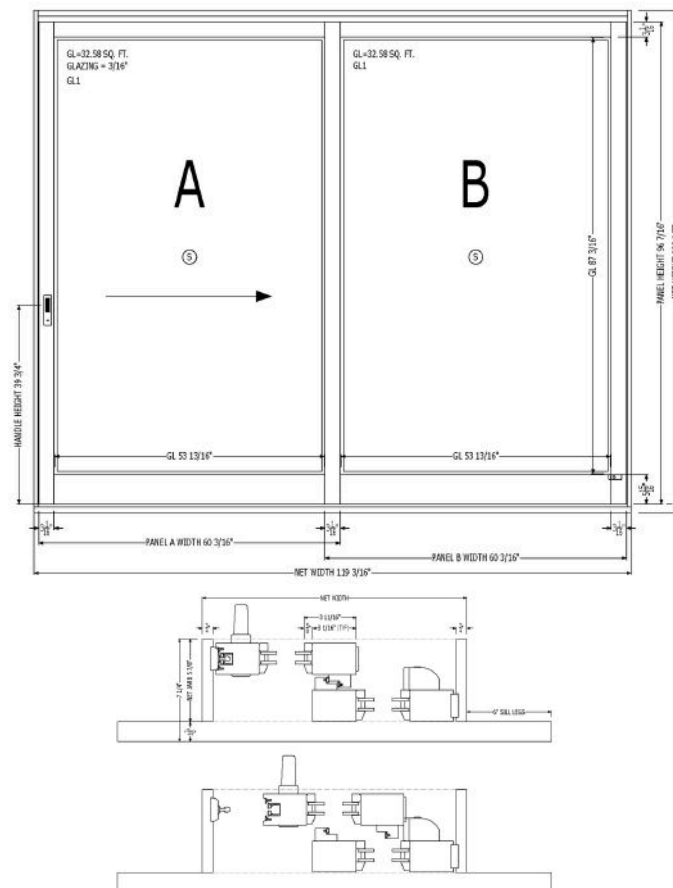
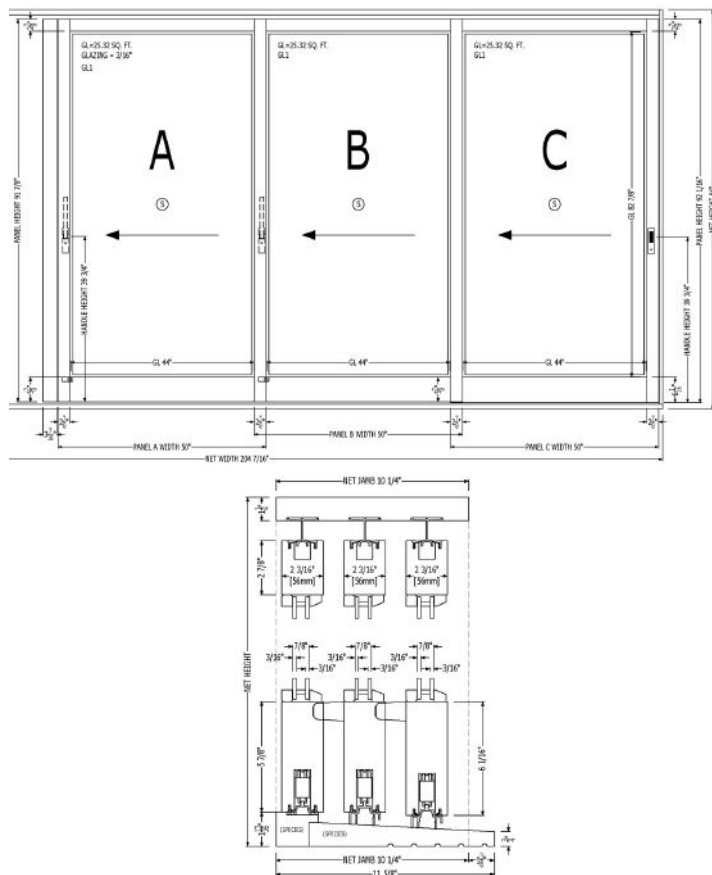
Lift & slide doors are offered with both draining and non-draining tracks, providing a flush, streamlined appearance. The track sits just **1/8" above finished flooring**, ensuring a seamless transition between interior and exterior spaces.

## Configurations

All-wood lift & slide doors can be custom-crafted in a variety of configurations, including pocketing, cornering, curved, or straight designs. They can feature up to **8 operable panels** for maximum opening flexibility.



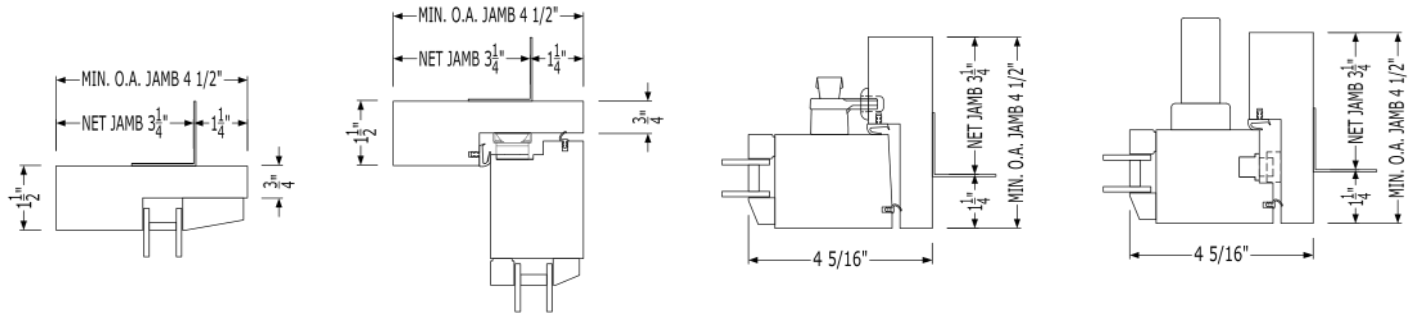
# Examples





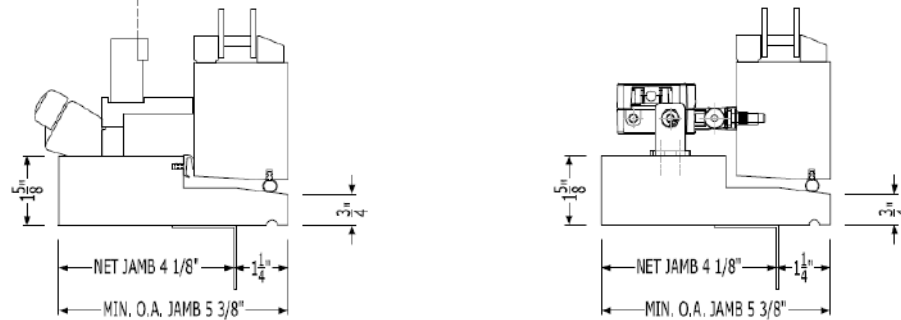
## Direct Glazed/Fixed Sash/ Push Out/ Multi Point

Net Minimum Jamb Depth - 3 1/4"



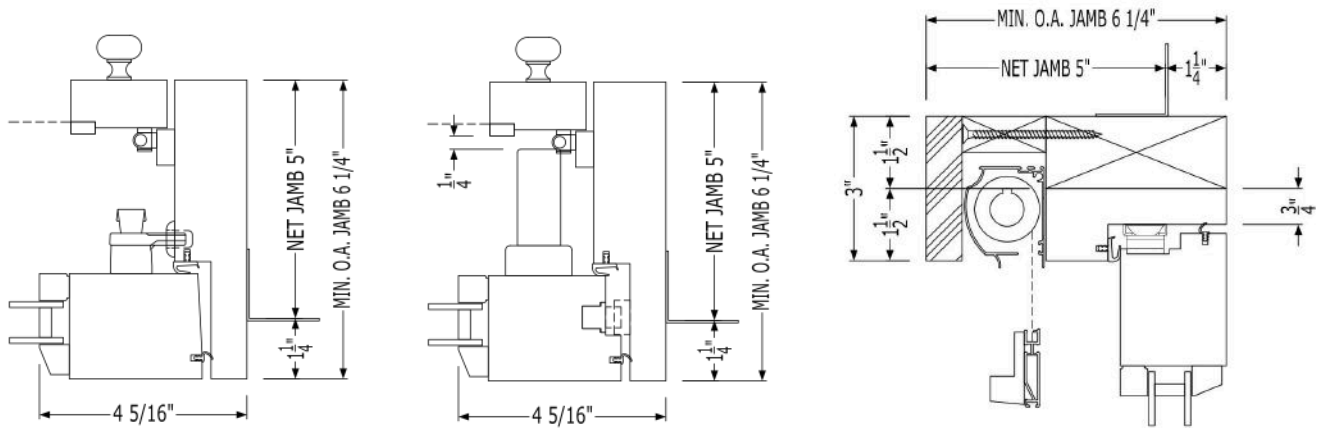
## Roto With Screen/Motorized Without Screen

Net Minimum Jamb Depth - 4 1/8"



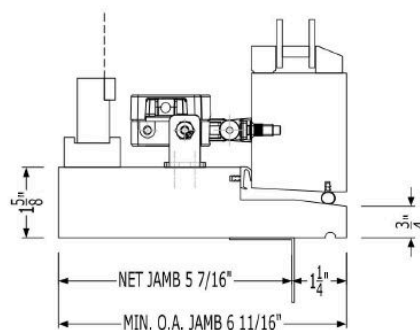
## Push Out & Multi Point With a Screen/ Concealed Screen

Net Minimum Jamb Depth - 5"



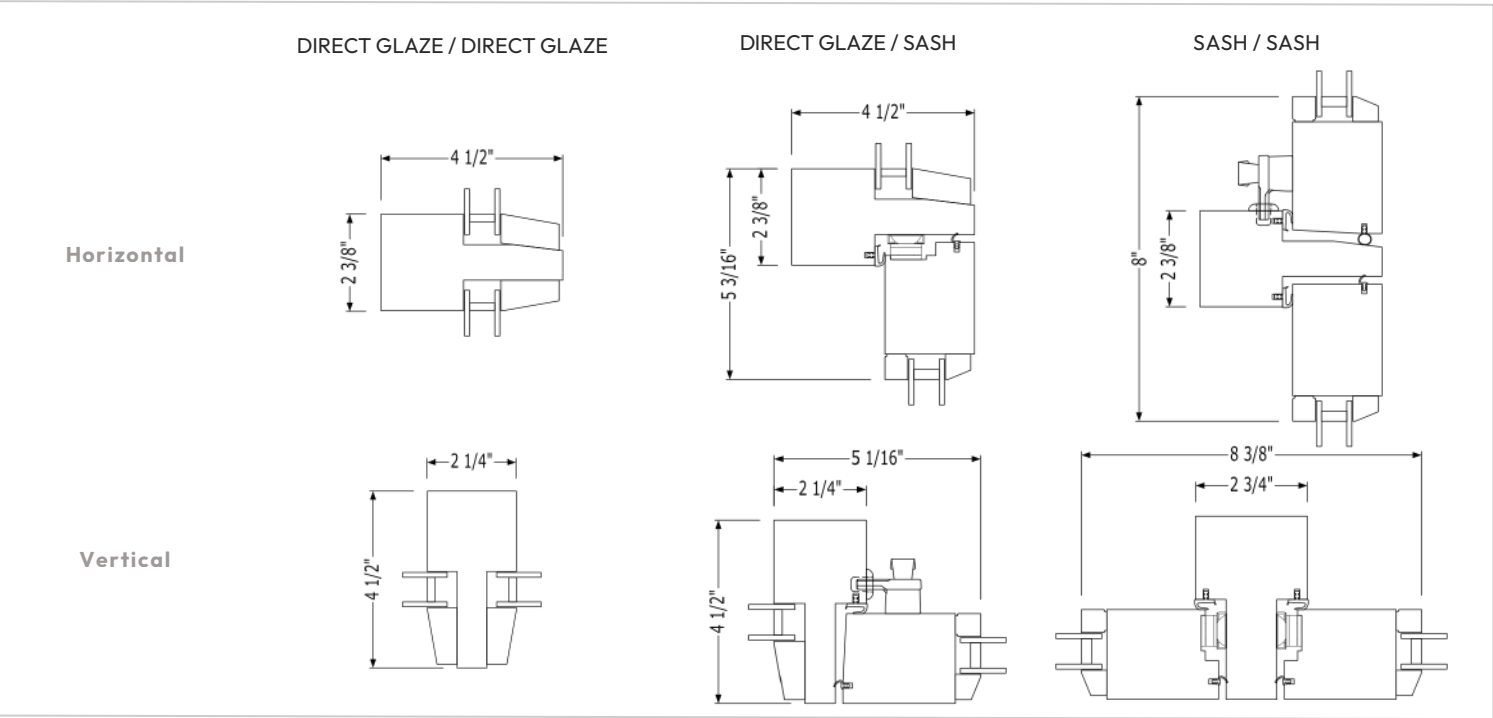
## Motorized With a Screen

Net Minimum Jamb Depth - 5 7/16"



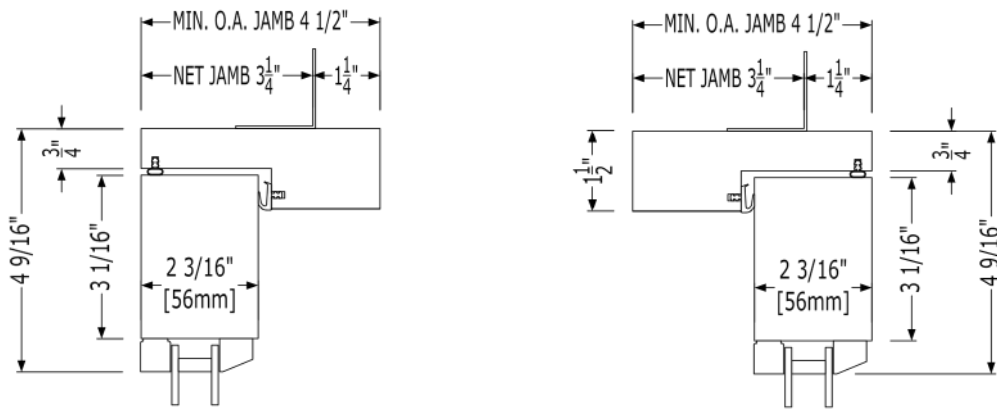


Vertical & Horizontal Mullion Options



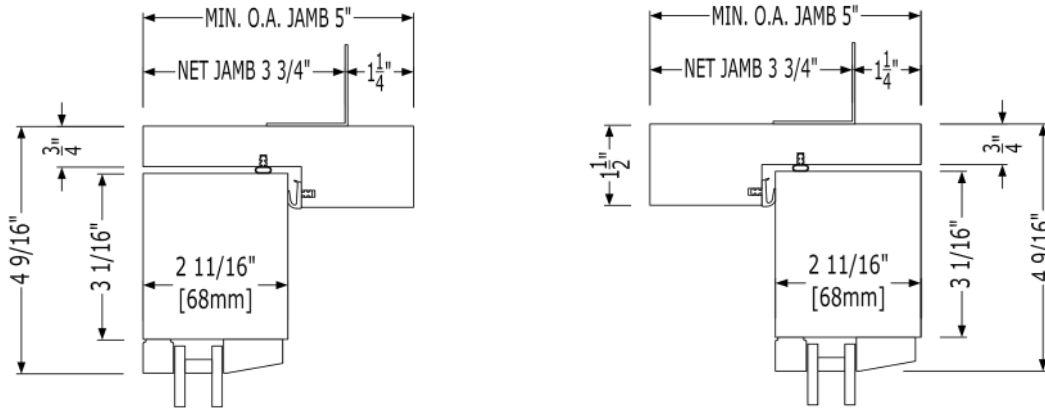
Inswing/ Outswing 56mm Hinged Door

Net Minimum Jamb Depth - 3 1/4"



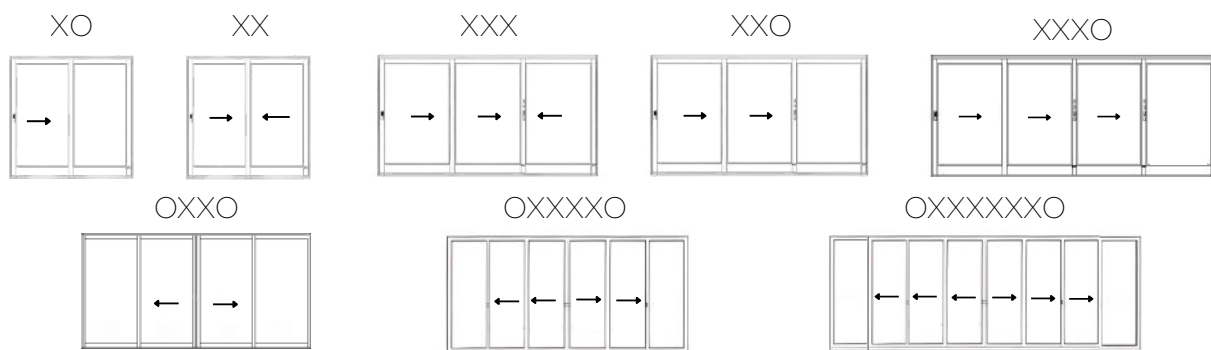
Inswing/ Outswing 68mm Hinged Door

Net Minimum Jamb Depth - 3 3/4"

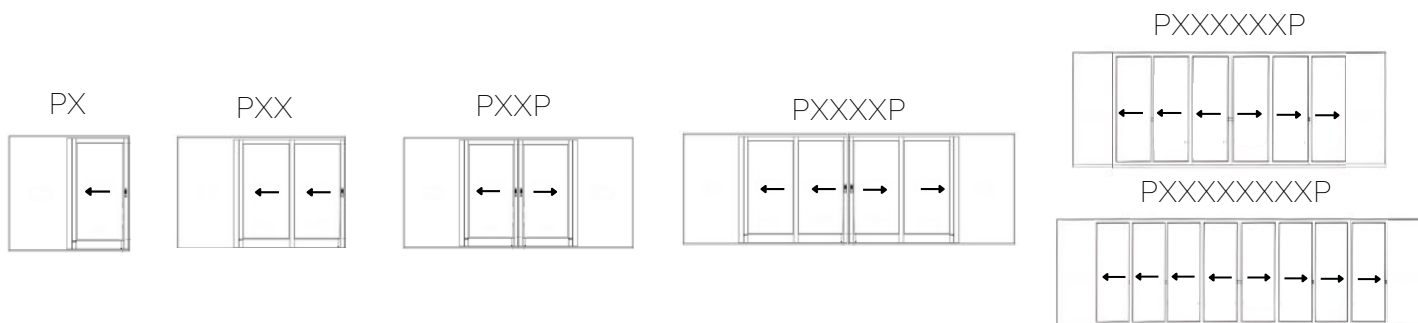




### Lift & Slide Configurations



### Pocketing Configurations



### Bi-Fold Configurations



**Please Note: Cornering configurations are available for both Lift & Slides and Bi-Folds. Pocketing configurations are also available for Lift & Slides.**



Core Options



Solid



Engineered



Q-Core®

Door Screen Options



Stile & Rail Panel Screen



Center Screen



Exterior Aluminum Roller Screen

Window Screen Options



Concealed Roll



Inswing



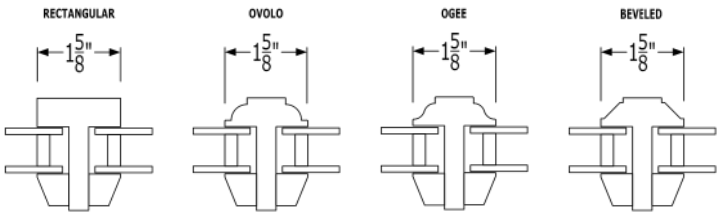
Fixed



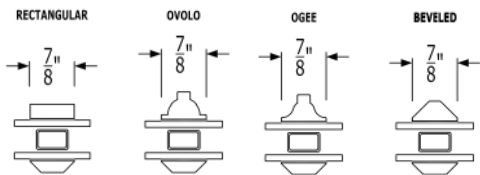
Fixed Aluminum

Divided Lites

True Divided Lite - TDL



Simulated Divided Lite - SDL



Bi-Fold Hardware



Stainless Steel



PVD bronze/black

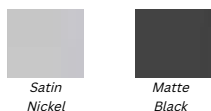
Please note: Dropbolt is not available in stainless steel. Substitute finish is natural anodized. Brass finish available for all hardware upon request.



## Window Hinged Options

## Door Hinged Options

Heavyweight Hinge



Concealed Four Bar Hinge



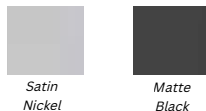
IPA Hinge



Custom Finish:  
Available Upon Request



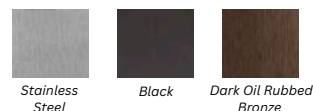
Heavyweight Hinge



Standard Hinge



Custom Finish:  
Available Upon Request

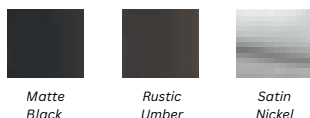


## Lift & Slide Hardware

Construction -  
Multipoint



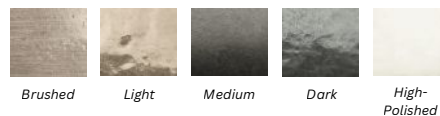
Dallas -  
Multipoint



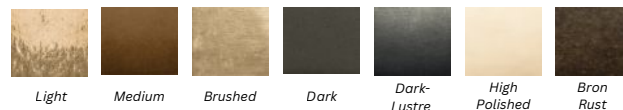
RMH Folding Handle -  
Multipoint



White Bronze



Silicon Bronze



## Window Hardware

Pushout



Roto



Multipoint Pushout

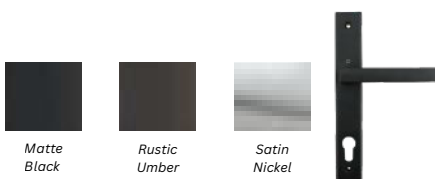


## Hinged Door Hardware

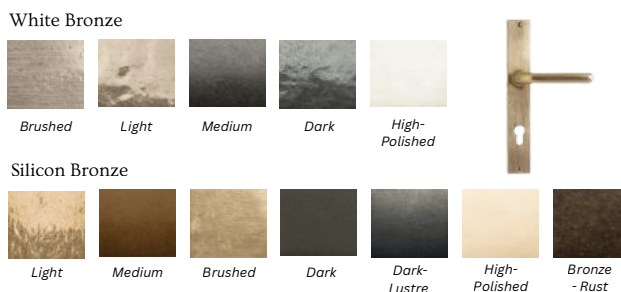
Construction Multipoint



Dallas Multipoint



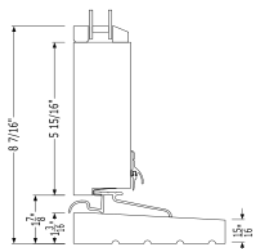
Custom Multipoint



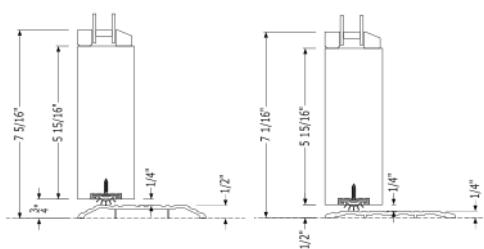
## Hinged Door Sill Options

### Inswing

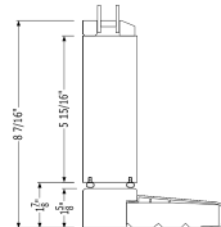
Wood Sill/Interlocking Threshold



Aluminum ADA

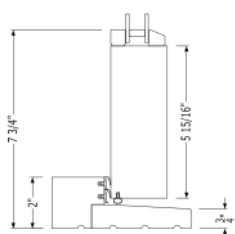


Thermally Broken Draft Sill

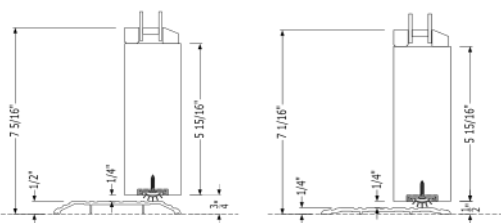


### Outswing

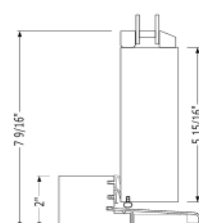
Wood Bumper Sill



Aluminum ADA

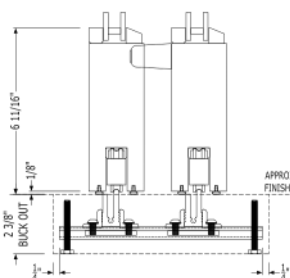


Thermally Broken Bumper Sill

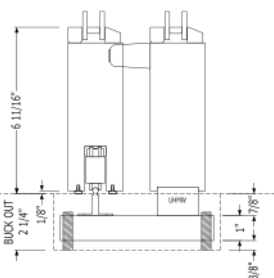


## Lift and Slide Sill Options

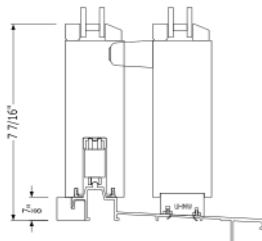
Draining Mudsill



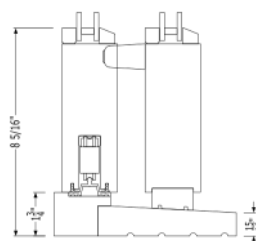
Non-Draining Mudsill



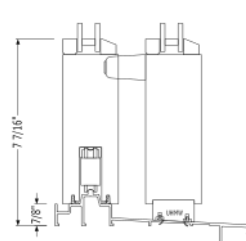
Thermally Broken Aluminum/Wood Sill



Wood Sill W/ Aluminum Tracks

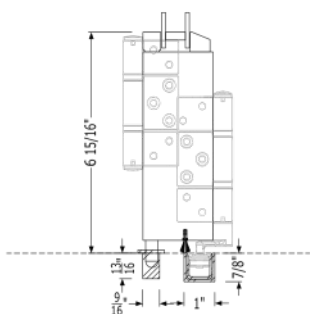


Aluminum Sill

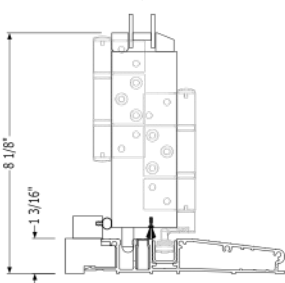


## Bi-Fold Sill Options

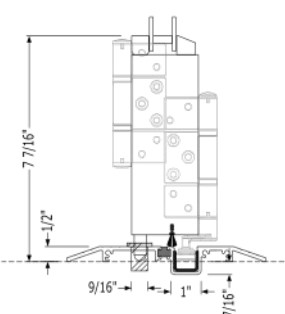
Channel



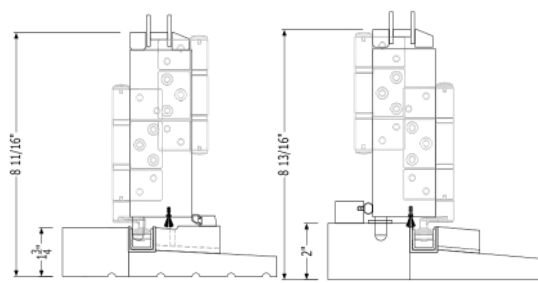
Aluminum Self Draining (Outswing Only)



Aluminum ADA



Wood Sill













# Pivot Doors



Less Frame. More View.

Available in classic stile-and-rail or sleek flush panel designs, pivot doors make a bold architectural statement. Precision-engineered pivot hinges that can support large panels & up to **1100 lbs.** Ensures smooth and effortless operation. More than simply functional, these doors transform any entryway into a commanding focal point—blending strength, scale, and style for a truly dramatic effect.

## Easy Install

Concealed pivot hinges can be integrated directly into the door, allowing for clean, straightforward installation without the need to recess or cut into the foundation. This design preserves structural integrity & simplifies installation.

## Large Sizes

Thanks to the strength of the pivot hinge, panels can reach impressive sizes—up to **144" tall** and **96" wide**—making bold, oversized openings not only possible but effortless.

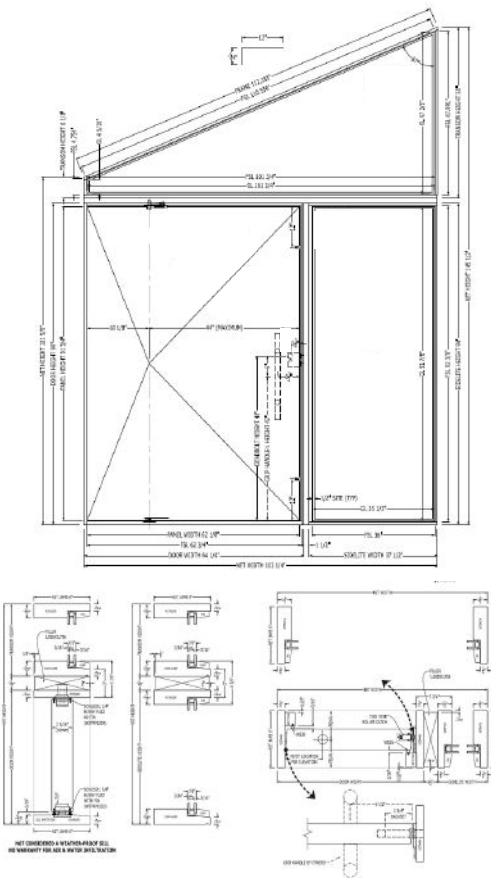
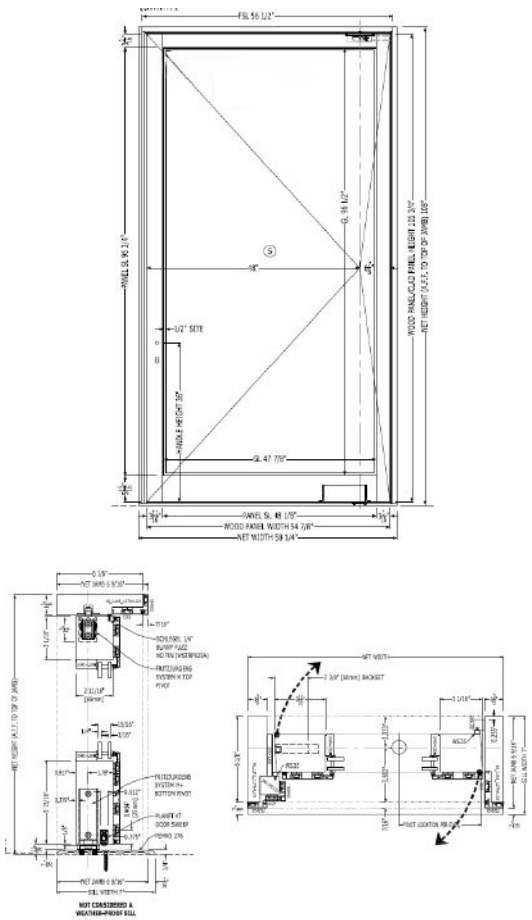
## Soft close Technology

Damper control ensures smooth and controlled closing of pivot doors, while hydraulic backcheck allows for fluid motion throughout operation. This mechanism effectively prevents slamming caused by wind or other external forces.





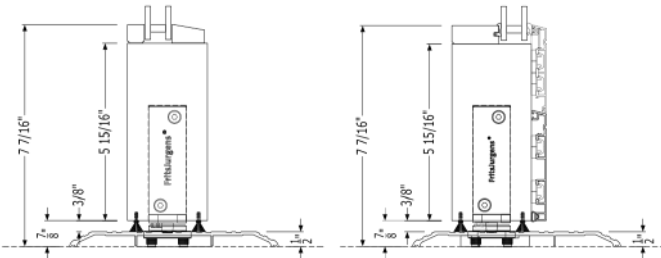
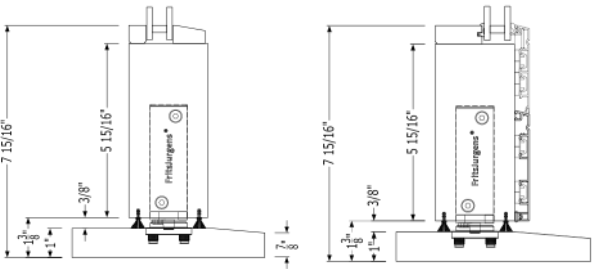
# Examples & Basics



## Sill Options

Wood Sill

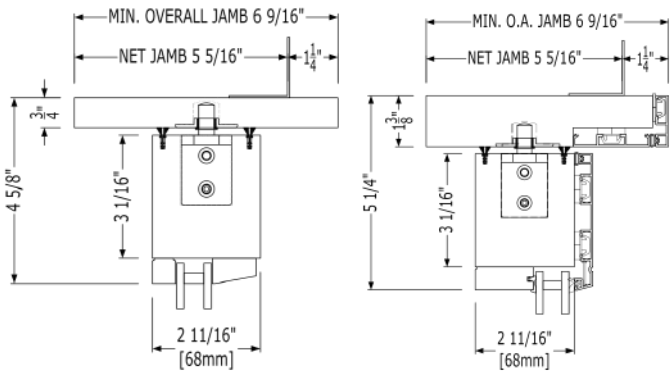
Aluminum ADA



## Jamb Depth

## Hinges

Net Minimum Jamb Depth - 5 5/16"















# Legacy Series

## Timeless Material Meets Modern Performance.

Quantum's Legacy Series artfully marries the timeless charm of traditional double-hung windows with the precision and performance of modern engineering. Every detail is thoughtfully considered, from enhanced glazing to advanced gasket technology, elevating a classic design into a superior architectural element.

For those who value authenticity, traditional weight-and-chain balances remain available, preserving the heritage of the design. Alternatively, a concealed spring balance system provides effortless, whisper-quiet operation—eliminating the need for bulky weight pockets while maintaining a sleek, uncluttered profile.







# Legacy Windows



Past Inspired. Present Perfect.

Quantum's Legacy Series offers single, double, and triple hung, fixed, casement, awning, retrofit, and specialty designs. Ideal for homes or historical landmarks, these windows preserve a traditional aesthetic while incorporating modern glazing and technology. Legacy systems also ensure consistent glass, muntin, and trim alignments across varied window operations.

## Concealed Balance System

Concealed balance systems offer a streamlined aesthetic by eliminating the need for bulky weight pockets within the jamb. Capable of supporting sash weights up to **40 lbs.**

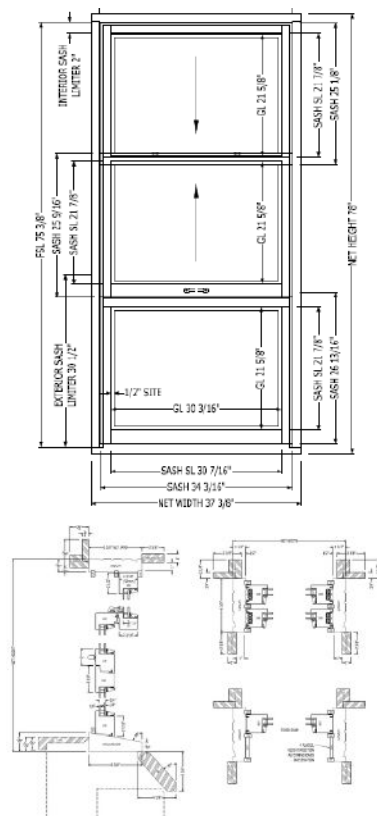
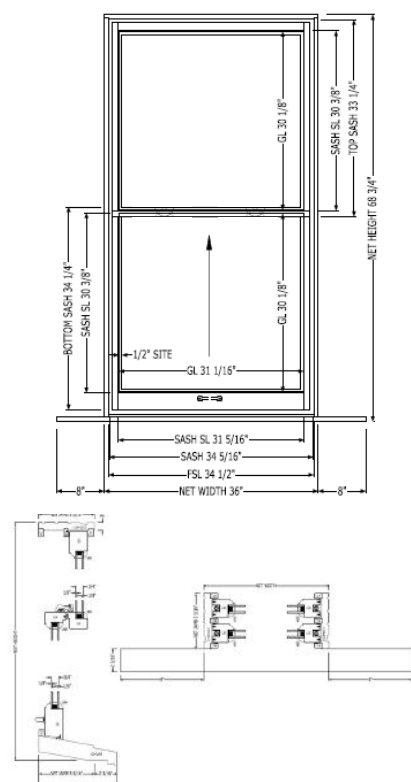
## Historic Replication

Legacy windows help historical landmarks retain their architectural charm by faithfully replicating original window designs. They can be customized with either true divided lites or simulated divided lites to match the building's historic detailing.

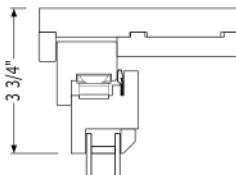
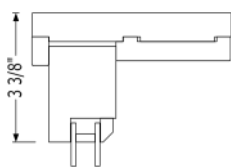
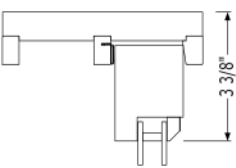
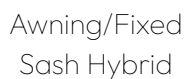
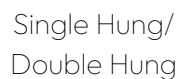
## Motorized Operation

Motorized operation is available upon request—an ideal solution for improving ventilation in areas with hard-to-reach windows or for those seeking the convenience of automated control.

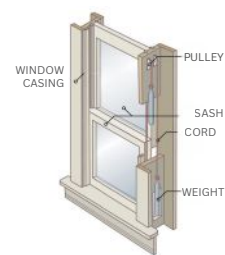
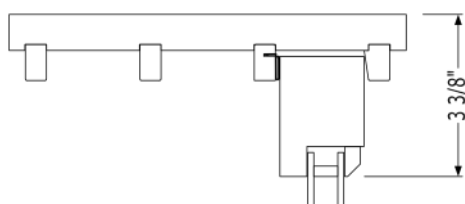




## Balance Systems



Overall Minimum Jamb Depth - 7 5/8"



## Block & Tackle

**40LB MAX**

## Lead Weight & Chain

**NO MAX WEIGHT**

## Feature

### Spring-loaded pulleys and cords

### Mechanism

Concealed inside  
window jamb

## Maintenance

Replaceable spring balance

## Lifespan

10-20 Years

## Aesthetics

Sleek, minimal,  
modern

Weights connected by  
chains or cords

Requires wall cavities  
(weight pockets)

Harder to repair,  
individual parts accessible

Long-lasting (decades)

Traditional, classic  
charm











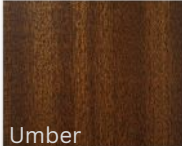
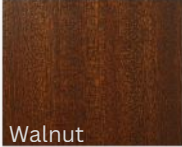
# All Wood Finishes

Standard Finishes

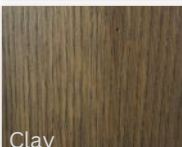
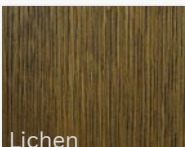
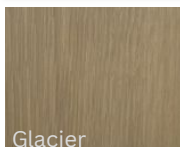
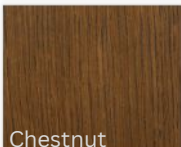
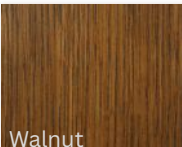
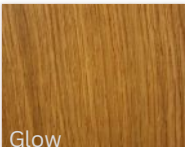
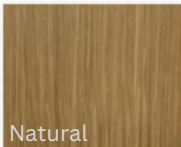
Sapele Mahogany

Matte

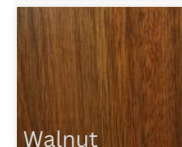
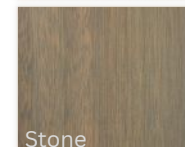
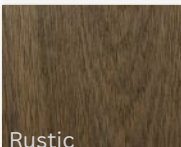
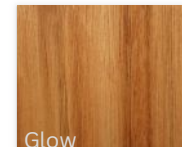
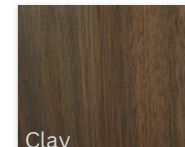
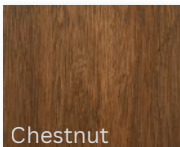
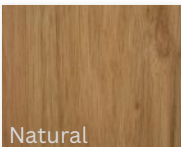
Satin



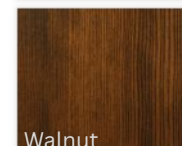
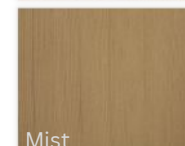
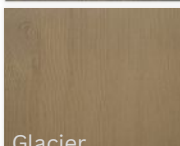
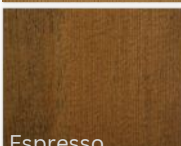
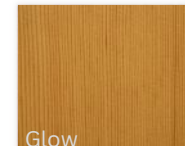
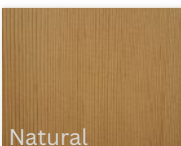
Rift Sawn White Oak



Red Grandis

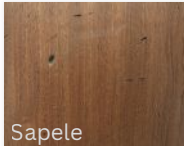


Douglas Fir

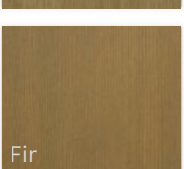
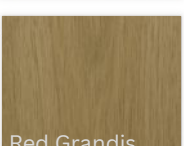
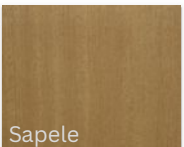


Specialty Finishes

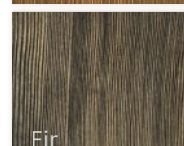
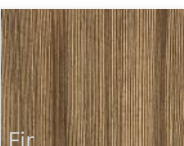
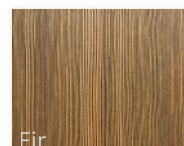
Distressed



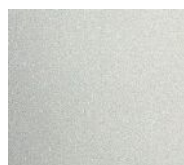
White Oak Match



Wire-Brushed



## Clad Finishes



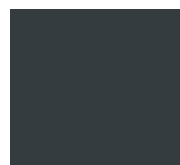
Clear Anodized  
AA-CO



Oyster White  
RAL 1013 FS



Moss Green  
RAL 6005 FS



Anthracite Grey  
RAL 7016 FS



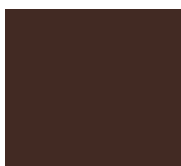
White Aluminum  
RAL 9006 MAT



Anthracite Grey  
RAL 7016 MAT



Traffic Grey B  
RAL 7043 FS



Chocolate Brown  
RAL 8017 FS



Chocolate Brown  
RAL 8017 MAT



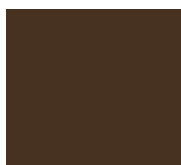
Grey Aluminum  
RAL 90067 MAT



Nut Brown  
RAL 8011 FS



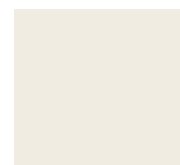
Red Brown  
RAL 8012 FS



Sepia Brown  
RAL 8014 FS



Grey Brown  
RAL 8019 FS



Pure White  
RAL 9010 MAT



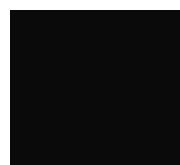
Grey Brown  
RAL 8019 MAT



Signal Black  
RAL 9004 FS



Signal Black  
RAL 9004 MAT



Jet Black  
RAL 9005 FS/MAT



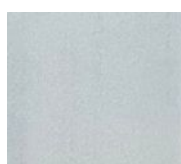
Custom Finish  
Available

## Frame Finish Types

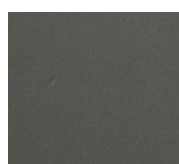
### All Wood Products



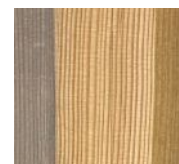
Raw  
Interior/Exterior



Primed  
Interior/Exterior

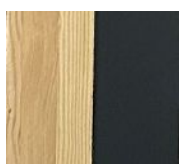


Full Finish  
Interior/Exterior

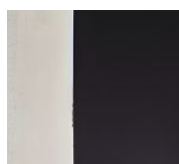


Full Split

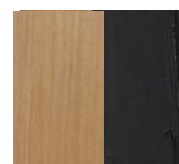
### Wood/Clad Products



Raw Interior/  
Painted Black Exterior



Primed Interior/  
Painted Black Exterior

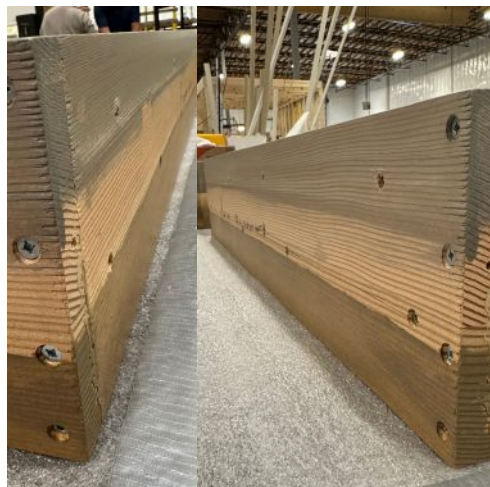


Full Finish Interior/  
Painted Black Exterior



# Nail Fin Options

## Installation Methods & Details



### No Nail Fin

Installed by screwing through the frame directly behind the sash, or alternatively through the use of clips or straps.



### Standard

Stapled onto exterior of frame. Not weatherproof. Serves well as a guide for installation placement.



### Screwed & Caulked (\$)

Fully caulked for a more weatherproof barrier. Screwed to jamb for added stability.



### Integrated (\$\$)

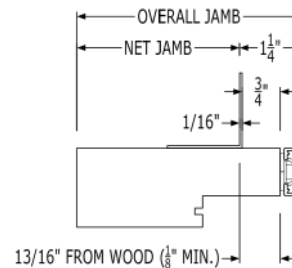
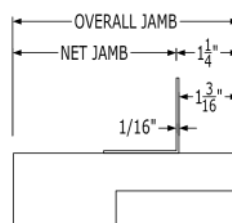
Caulked and screwed for secure installation. Seamlessly integrates under cladding for a more weatherproof seal. Powder-coated to match cladding finish.

#### Please Note:

- Standard setback on nail fin is 1 1/4".
- Max setback on nail fin is 1 3/4".

**(\$)** Indicates premium upgrade option.

**(\$\$)** Indicates a higher additional option.







FRAME YOUR MASTERPIECE.







7123 197th PL NE,  
Arlington, WA 98223

425.259.6650

[quantumwindows.com](http://quantumwindows.com)

